



Dates for your Diary

December

Tuesday 1st December

Salvation Army Carol Concert at URC

Friday 4th December

School Christmas Fayre

Saturday 5th December

St. Faith's Children's Session
Switching on of Christmas Tree Lights

Sunday 6th December

Messy Church Christmas Crib Service

Tuesday 8th December

St. Faith's SC Christmas Coffee Morning

Monday 14th December

School Christmas production

Saturday 19th December

Decorating of St. Faith's for Christmas

Sunday 20th December

Carol Services at the URC and St. Faith's

Monday 28th December

Walking Group Christmas walk

Friday 15th January

Deadline for applications for Primary School places

Sunday 17th January

Walking Group walk

Thursday 21st January

History Society talk

Tuesday 26th January

Messy Church

Kilsby Kronickle

Also available on the Kilsby Village Website
www.kilsbyvillage.co.uk



Christmas is nearly here again and the weather has at last turned seasonably cold. This edition brings news of all the usual events in the village to mark the season, starting with the Salvation Army concert at the URC chapel and the school Christmas Fayre, followed by the always popular Christmas Tree event. This year Katie Rose will be helping Father Christmas switch on the lights as she won the drawing competition with the lovely picture of a Christmas Tree which appears on page 6. Well done, Katie!

Looking further ahead, support is being looked for to provide and maintain planters around the village next year, as a community initiative to brighten the village following the success of the yarn-bombing. This is an excellent idea which we hope will 'take off'.

Once again there is a vacancy on the Parish Council so if you are interested in undertaking this very worthwhile role do get in touch with the Parish Clerk.

We were very sad to learn of the death of Brian Lomax, who was one of our District Councillors for six years from 2006 to 2012 and a regular contributor to this magazine. Our sympathies go to Catherine and his family.

This time we have two items with a history theme - the third of Gren Hatton's articles about Barby Hill and a piece from Crick History Society about the Heritage Boards which have been put up at DIRFT.

We hope you will find lots to interest you in this edition and that you all enjoy a very happy Christmas and a happy and healthy 2016.



***WE WISH ALL OUR READERS
A VERY MERRY CHRISTMAS
AND A HAPPY NEW YEAR***



KILSBY PARISH COUNCIL

COUNCILLORS (from December 2015)

Name	Address	Tel	Areas of responsibility
Reg Dunn	9 Cowley Way Kilsby, Rugby CV23 8XB regandvividunn@btinternet.com	01788 823148	CHAIRMAN of the Council Highways Verges/Mowing Budget
Charles Smedley	5 The Lawns Kilsby, Rugby CV23 8YT chassmedley23@aol.co.uk	01788 822241	VICE CHAIRMAN Policy Documents Planning Committee Cemetery and Extension
Wendy Clark	24 Fishers Close Kilsby, Rugby CV23 8XH wendyclark@hotmail.com	01788 823297	Finance Working Party Recreation Ground Internal Financial Control
Richard Page	14 Barby Road Kilsby, Rugby CV23 8XD richvalpage@gmail.com	01788 822480	Budget/Finances Street Lighting Planning Committee
Liz Rochford	Japonica, 23 Main Road Kilsby, Rugby, CV23 8XR ghillie38@hotmail.co.uk	01788 822791	Youth Liaison School Liaison
Sarah Stainton	Tudor Cottage, Manor Road Kilsby, Rugby, CV23 8XS sjstainton@gmail.com	01788 822477	Facebook Page Village Hall Liaison
Bob Gent	7 Fishers Close Kilsby, Rugby, CV23 8XH bobgent@bt internet.com	01788 823528	Planning Committee Kilsby Kronickle
Jenny Fisher	5 Middle Street Kilsby, Rugby, CV23 8XT jmfisher@hotmail.co.uk	01788 823027	Neighbourhood Planning link
Barbara Almond	Orchard House 22A Rugby Road Kilsby, Rugby, CV23 8XX barbara@almondconsult.com	01788 824333	Planning Committee
Rich Haslett	Sundial Cottage, Essen Lane Kilsby, Rugby, CV23 volospian@volospian.net	01788 878418	Planning Committee Website NCALC/ACRE docs.

One vacancy

BURIALS - Please contact Helen Smedley, 5 The Lawns, Kilsby, Tel: 01788 822241, hsmmedley@talktalk.net
HIGHWAY WARDEN - Keith Adams keith@kilsby.net

District Councillors: Catherine Lomax, 24 Castle Mound, Barby, Rugby CV23 8TN, Tel: 01788 890939
 clomax@daventrydc.gov.uk
 Ian Robertson, The Old Mill, Winwick, Northants. NN6 7PD, irobertson@daventrydc.gov.uk

County Councillor: Malcolm Longley, mlongley@northamptonshire.gov.uk

DAVENTRY DISTRICT COUNCIL 01327 871100. **NORTHAMPTONSHIRE COUNTY COUNCIL** 0300 126 1000
 Clerk to Kilsby Parish Council - Mrs Catherine Camp, 18 Kilsby Road, Barby, Rugby CV23 8TT
 Tel: 01788 891184 e-mail parishcouncil@kilsbyvillage.co.uk
 Website www.kilsbyvillage.co.uk

KILSBY PARISH COUNCIL

(From Councillor Bob Gent, Tel: 823528 and the Parish Clerk parishcouncil@kilsbyvillage.co.uk)

Parish Council Meetings

Council meetings take place on the **first TUESDAY** of the month, at 7.30pm in the Kilsby Room of Kilsby Village Hall. The next meeting will be held on Tuesday 1st December 2015.

The first Parish Council meeting of the new year will be TUESDAY 12th JANUARY 2016 in the Main Hall at Kilsby Village Hall. This is to save the Clerk from having to work over the Christmas/New Year period to produce the agenda. The February meeting will be the usual first Tuesday of the month on 2nd February 2016.

All meetings are open to the public and anyone is welcome to come along and raise any issue that concerns them, or listen to the debate. The Agenda is published on the notice board outside the Village shop, or can be viewed and printed off the parish website: www.kilsbyvillage.co.uk

Vacancy for a Parish Councillor

Anne Cole has recently stepped down as a Parish Councillor and there is now a vacant seat on the Parish Council. Anyone interested in helping to play a part in how the Council Tax is spent and who would like to help make Kilsby a better community to live in, is welcome to become a Councillor. You need to commit to attending a meeting from 7.00 – 10.00 pm on the first Tuesday of every month. If you are keen to know more about the role, please contact the Parish Clerk (891184).

Street Lighting

Please report non-functioning street lights to Councillor Richard Page (tel: 822480) who will arrange repair.

The Parish Council has replaced the concrete poles in Boxwood Drive, and the old lamps which required 94W to run them have been replaced by 22W LED bulbs which will be dimmed by 50% from midnight to 6.00 am.

We have £23,000 left in the pot from DIRFT 2 development, and this will be used to replace all 26 mercury street lamps for which we can no longer get replacement bulbs. We will then ensure the remaining concrete columns are upgraded since they are 'well past their sell-by date'. This work will commence in December and should help to reduce both energy costs and maintenance costs of street lighting for the parish.

Planning Matters

Gladman Developments Limited have submitted another almost identical application for residential development of up to 99 dwellings to the rear of Rugby Road. This will be considered by Daventry District Council Planning Committee on 25th November and the Officer is recommending it for refusal. If it is refused, Gladman still have a right of

appeal. The Parish Council has lodged an objection to this application.

Highway Matters

We have had complaints that the pavements in the village are uneven. These are maintained by Northamptonshire Highways. If you find a particularly bad area, please log it with Northamptonshire County Council Highways Street Doctor service by either telephoning 0300 126 1000 or via the website:

www.northamptonshire.gov.uk/streetdoctor

Please note that most potholes need to be at least 5cm deep before they are deemed bad enough to fill. The County Council has agreed to resurface the worst areas of the footpath on Middle Street/ Manor Road junction near Smarts estate, so we hope that will help a bit. Although many other areas of pavement are rough, they only meet the criteria to be repaired if holes are more than 200mm deep.

Planters around the Village

Following the success of the WI yarn-bombing there has been a suggestion that it would be nice to have planters around the village sponsored by village groups. If you think this is a good idea, and you or your organisation is prepared to sponsor a planter and plant and maintain it, please let Jane George know on 822827. (Eds. See also page 11.)

Defibrillator

The Parish Council would like to thank Lesley Loader who has volunteered to check the defibrillator on a weekly basis once it is installed. We are still awaiting information about when it will be installed in the phone box on Main Road.

Youth Club

The Parish Council is seeking a qualified Youth Worker to run a Youth Club on Friday nights in Kilsby Village Hall from 6.00 - 8.00 pm for Junior School Children and from 8.00 -10.00 pm for children aged 11-15 years. This will run in term time only. Anyone interested in applying to run the youth club is invited to send a CV to the Parish Clerk.

Unpleasant Business

It has been brought to the attention of Councillors that human excrement has been found on the footpath EW6 which runs from Rugby Road between House No 12 and 14 to the railway bridge on the A5. The Police have been notified, and are very concerned. Please report any suspicious behaviour to the police on 101 to try and make sure this does not happen again.

The Parish Council would like to wish all parishioners a happy Christmas and prosperous New Year. You will find details of Christmas waste and recycling arrangements on page 21 of this magazine and on Daventry District Council website. Please can we remind you that Christmas trees will no longer be collected from outside the Village Hall, so please do not leave them there.

FROM DISTRICT COUNCILLOR CATHERINE LOMAX

(Tel: 890939, 24 Castle Mound, Barby, CV23 8TN, clomax@daventrydc.gov.uk)

Gladman – Rugby Road.

As I write this, the expected resubmission will be considered by DDC Planning Committee next week, 25 November, and we hope the Committee will follow the Officer's advice to refuse what is essentially an unaltered application.

Local Plan

The Councillors' working group, of which I am a member, has had its first meeting. The group's remit has been extended from the Settlements and Countryside Local Plan to include the Gypsy and Travellers, and Travelling Showpeople Local Plan. The timetable for completion with this extended remit is three years. The Joint Core Strategy's housing need in rural areas has already been met, but this does not mean that no more development will take place in villages. In the Local Plan villages will still be placed in a hierarchy identifying the most sustainable settlements, which will be used to determine planning applications.

In drawing up the local plan there is a 'Duty to Co-operate' placed upon neighbouring authorities. I pointed out, with support from other councillors, that this had not been evident yet to local residents, particularly in relation to the Rugby Mast site development. Because of the impact on Kilsby of this development I shall be keeping a close eye on how this 'Duty' is working in practice. I will keep you updated.

Grants

One-off grants of up to £500 for community events are now available from DDC for 2016. More details from Tim Cantwell, Community Development Officer at DDC.

Waste winner

DDC won a Bronze in the Clean Britain Awards in November, in the small local authority category. This was for its recent schemes to tackle dog fouling, including the orange spray initiative, and its plans to introduce a Public Space Protection Order, which comes into force on 1st December 2015, and will see stiff penalties imposed.

The Christmas season is upon us, and I wish you all a wonderful time, and a splendid 2016.

Finally, I thank all of you who sent cards and messages of condolence on the recent untimely death of my husband, Brian. He represented Kilsby with me on the District Council from 2006 to 2012, and very much enjoyed doing so. And many thanks too to those who attended his funeral service on 20 November. The huge support given to me and our daughter have helped to sustain us through the last difficult weeks. Thank you all.

Catherine

St Faith's Church Children's Session

(From Fiona Gibbs (Tel:823530 and Marion Davis, Tel: 822188)

Our next children's event will be in St Faith's Church on Saturday December 5th from 10.00 am to 11.30 am and will be themed around Christmas.

Primary school children please
Parents welcome to stay.

Please put the date in your diary.

New Perspectives Art Exhibition 30th October to 1st November 2015

It really was a very special weekend for we artists at Kilsby Village Hall. We felt so comfortable being there and everything worked so smoothly. Marj, Julie and Tom were terrific - so considerate and helpful.

Footfall was approximately 300 and the reaction and interest shown by visitors, particularly from the village, was outstanding and genuine. Over £200 was collected and has been forwarded to Parkinson's UK. Thank you for your support and we hope that you enjoy your purchases.

Judy Haslam-Jones, Winifred Wilmot and Jack Kirk



CHRISTMAS POST FOR KILSBY

This Christmas, the 1st Kilsby Guides are once again running Kilsby's own Christmas post. We will collect your Christmas cards and deliver them (only to homes in the village. Sorry, we won't do Rugby or Lapland).

How will it work? You will be able to buy special stamps made by the Guides at Kilsby Post Office from Saturday, November 28th up to Saturday, December 19th and post your cards there too. Each stamp will cost 25p, or five for a pound, with all the money raised going to Cancer Research and the Guides.

The guides will deliver your cards on Sunday, December 20th. So why not save your legs, support the guides and have a great Christmas!!

For more details, see posters around the village or contact 1st Kilsby Guide leaders: Sue Curtis (822039, 07764 335830), Nikki Masters (07702 604273, 824273) or Anne Lewis (07971 106366)

FROM THE HORSE'S MOUTH :

KILSBY POST OFFICE & STORES

(From Diana Humphries, Tel: 822846)

There are so many rumours flying around that we thought it might be useful to give an up-date. We have been on the market since 2nd April 2015, very much focused on selling as a going concern. Whilst there has been some interest there have been no offers and, as I write, there is no prospective purchaser in view.

We are currently discussing the situation with another agent and have been advised to be prepared to still be here for some time yet.

When we have been asked what we will do if we don't find a purchaser we have been honest in saying that we will close the business rather than continue working ad infinitum. This has been seized upon and all sorts of rumours started with people inventing a wide variety of stories.

So: We are NOT, repeat NOT, closing at Christmas. We have NOT, repeat NOT, yet made a decision to close at any specific date.

If you hear anything else from anybody other than us then don't believe it - we will advise of any new decisions or progress.



The Village PhysioRooms

Physiotherapy and Sports Injury Clinic

Private physiotherapy service. Treating a comprehensive range of conditions; from joint and mobility problems, to sports injuries and post-operative rehabilitation.



SARAH LITTLE MCSP BSc

State registered with 22 years of experience

Local service based at Crick Medical Practice

Registered with all major health insurers

01788 822203

www.thevillagephysiorooms.co.uk

villagephysiorooms@btinternet.com

hcpc health & care
professions
council

**CHARTERED
SOCIETY
OF
PHYSIOTHERAPY**



Kilsby Christmas Tree Committee



Kilsby Christmas Tree Event Saturday 5th December 2015



Designed by: Katie Rose, age 9, winner of the Kilsby Christmas Tree Competition

Come and meet Father Christmas outside the Kilsby Post Office and Stores at **4.45pm on Saturday 5th December**. Father Christmas will then ride his sleigh to the village green and will switch on the Christmas Tree lights at **5.00pm** with the help of Katie Rose.

There will be mulled wine and mince pies for sale, and fairground rides for the children.

The 1st Kilsby Guides will also be selling Christmas stamps which can be used to post Christmas cards to anyone living in Kilsby. Each stamp will cost 25p, or five for £1, with all the money raised going to charity. You will be able to post cards there too.

NEWS FROM ST. FAITH'S FOR DECEMBER AND JANUARY

(From Nancy Golding, Tel:822611)



St. Faith's Church extends a warm welcome to everyone in our parish to join us at our services.

6 December	8.30 am	Holy Communion	Revd. Doug Spenceley
13 "	10.00 am	Family Service	Revd. Jan Collins

CHRISTMAS SERVICES

16th " 10.00 am School Christingle Service in St. Faith's Church Revd. Doug Spenceley

17th " 11.15 am Stephenson Court Christmas Service

20 " 8.30 am Holy Communion BCP Revd. Chris Tremanththanmor

**20th " 4.00 pm *Nine Lessons & Carols*
*followed by mince pies and mulled wine.***

**24th " 11.30 pm *Christmas Eve Midnight Service of Holy Communion at St. Mary's Barby*
*Revd. Jan Collins***

25th " 10.00 am *Christmas Day Holy Communion at St. Faith's Church, Revd. Liz Cowley*

**27th " 10.00 am Holy Communion Team Service at Holy Cross, Daventry
NO services at St. Faith's or St. Mary's.**

2016

3 rd January	8.30 am	Holy Communion
10 "	10.00 am	Family Service
17 "	8.30 am	Holy Communion BCP
24 "	10.00 am	Parish Communion
31 "	10.00 am	Joint Benefice Service of Holy Communion

IMPORTANT REMINDER FOR PARENTS:

If your child turns four before 31st August 2016, and you haven't already done so, you need to apply for a Primary School place **by 15th January 2016.**



Everything you need to apply is available on the school admission section of Northamptonshire County Council's website, details of which are at the end of this article.

This includes the application form to be submitted online, guidance, information about how school places are allocated, the entire schools directory with contact details, Ofsted information, and each school's admissions policy, as well as information about how to get help.

www.northamptonshire.gov.uk/admissions

WALKING GROUP

(From Lesley Loader Tel: 822246
jlloader@hotmail.co.uk)

Traditionally, we don't walk on the third Sunday in December but instead walk between Christmas and New Year over to Crick (the long way round over the fields), have a snack in the Wheatsheaf and return via the bridle way. This year the walk will be on Monday 28 December leaving the White House at 11.00 am. Bring along visitors, children, dogs - all welcome!

Back to normal in January; that is walking on the third Sunday of each month. So we shall be walking on January 17th, leaving The White House at 10.00 a.m. As the days are shorter we shall probably walk from Kilsby without the need for transport. Walks are between 7 and 9 miles, usually with a stop round lunch time, at a pub, when possible, for a drink and use of facilities. Mostly we take sandwiches as pubs mainly concentrate on roast dinners on Sundays - those that are still in business.

ST. FAITH'S SOCIAL COMMITTEE

(From Kathy Jenkins, Tel: 822464)

Quiz

The Social Committee Quiz on Friday 13th November was very successful, and was enjoyed by all who were there.

The amount raised for Church Funds was £325.50. Thank you to all who came and supported us.

Coffee Morning

Our Christmas Coffee Morning is on Tuesday 8th December 10.30 am till 12.00 noon.

We shall have another Tombola with a prize every time (cost £2 each). We shall also have our usual raffle. There will be lovely cakes and mince pies, so do come and enjoy a lovely Christmassy morning with us.

Decorating of St. Faith's for Christmas

The decorating of St. Faith's Church for the Carol Service, will be done on Saturday 19th December starting at 9 30 am. I shall bring tea, coffee and biscuits for everyone. It's a lovely job to help with and the church always looks beautiful, so please come and help us to make it look lovely. If you have any greenery to spare - could you bring it with you please. Thank you.

HISTORY NOTES

Heritage Boards at DIRFT

From Jim Goodger, Crick History Society
www.westnorthantshistory.co.uk/crick

The Half Way House garage and hotel together with the remains of the Kilsby & Crick Railway station were demolished by Prologis when the rail port was extended. Prologis have responded positively to a request from Crick History Society to commemorate these local landmark buildings.

Heritage boards telling their story can now be visited. There is also information on the historical development of the area now comprising the DIRFT site. The boards and viewing area overlook the old station goods yard which is now part of the rail port behind the Tesco warehouse. The entrance is the old access track to the goods yard where there is parking space. Leave Kilsby on the A5 and after a mile the entrance is immediately on the left after the railway bridge.

Well worth a detour and visit. You can also see the new rail port in action.

Kilsby Garden and Produce Association



(From Christine Clay, Secretary, Tel: 822373)

Annual General Meeting

KGPA AGM took place on 17th November. 28 members braved the gales to attend the meeting. We had a demonstration of Christmas decorations we can make at home by Marie from Remo Nursery at Daventry, which is well worth a visit.

Our events of 2015 followed the usual mix with the Gardeners' Party bringing members together socially.

Our membership has fallen slightly from 132 to 126. However we very much hope the new residents in the village will want to join. Membership is £3 per year and production of your card gets you a discount of 10% on plants from Barby Nursery and 10% on all items at Dennetts of Daventry.

Our first event each year in March is The Gardeners' Party at Pytchley House which this year produced a profit of £112. In May the third Seedling and Plant Share took place on the Green in Barby Road, with growers selling excess plants.

For the first time we had sponsorship for the printing of our the schedule for our Show, which always takes place on the last Sunday in September. £72 towards the printing of the schedule was received from Francis Jackson Homes. We deliver schedules to all the houses in the parish, a total of 520, but only 90 people exhibited in the Show this year. We had an increased number of entries but fewer people attended the event, so there was a slight loss in income.

Once again the Christmas Tree Committee provided teas, with an amazing range of delicious home made cakes. They made a profit of £80.

Charles Smedley organises the bulk ordering of seeds and compost which saves a considerable amount for gardeners.

We would be delighted to welcome newcomers to the village into the Association.

The Secretary has decided to retire after 38 years, and was presented with a card and garden voucher as a token of appreciation for her service. Volunteers were sought to take over the post of Secretary and we were delighted when Sue Curtiss offered to take on that role. Diana Smith who has now lived in the village for three years said she too would like to be involved. Many thanks to both ladies.

MESSY CHURCH **Christmas Crib Service**

3.00 pm on Sunday, 6th December
at URC Chapel, Kilsby
All Welcome

Our next Messy Church activity
event will be on Tuesday,
26th January from 4.00 pm – 5.30 pm

Children with parents/carers
welcome to join in the fun and tea.



Music at The George

Telephone: 01788 822 229;
www.thegeorgeatkilsby.co.uk

JAZZ SUNDAYS
With JOHN DUNMORE
1.00 pm – 4.00 pm

December 6th 2015
January 3rd 2016
February 7th 2016

Regular Sunday lunch & specials
served Midday – 3:00 pm

OPEN MIC FRIDAYS 8:00 pm
EARS & PERFORMERS WELCOME

December 4th 2015
February 5th 2016

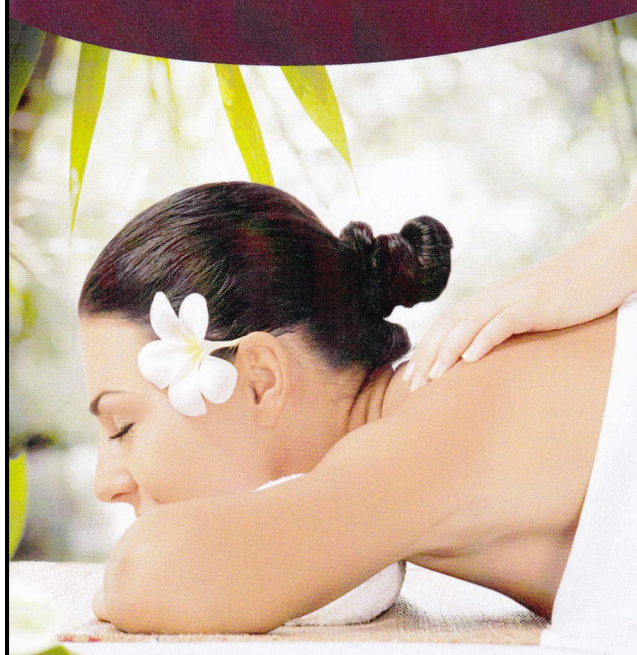
Regular Bar Menu & Evening Menu available

B Beautiful **Hair & Beauty Salon**

19 Lower Street, Willoughby, Rugby CV23 8BX
Tel .01788 890889

www.bbeautifulrugby.co.uk

LADIES, GENTS & CHILDREN'S HAIR
NAILS SPRAY-TANS FACIALS MASSAGE WAXING & MORE



10% DISCOUNT

For new clients,
with this advertisement.

asthma
stress
 stroke
 angina
 cancer
 rehabilitation
C.O.P.D
 anxiety
 arthritis
 Depression
brain
injury
 neck pain
 weight
 problems
 joint
 replacement
back pain
Poor
 mobility
 amputees
 diabetes
heart

Reach for Health

is a unique centre focused on helping people recovering from traumatic health events or living with chronic life-long illness. We also cater for those wishing to build and maintain a healthy lifestyle with [expert guidance](#).

[Telephone us](#) for a chat or talk to your doctor about a referral. We look forward to helping you.

Tel 01327 871118

www.reachforhealth.co.uk

16-18, High March, Daventry
 Northampton NN11 4HB

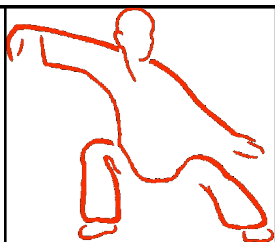


**HEART
START**



NHS





TAI CHI FOR BEGINNERS

Starting in January 2016, a new class for anyone interested in learning this gentle yet challenging form of exercise.

Tuesday mornings
10.00 am - 11.00 am

At Kilsby Village Hall

Please call Lorna on 823246
for further details.

KILSBY IN BLOOM?

(From Jane George, Tel:822827
jm.george@hotmail.com)


Now the very popular 'yarn-bombing' has finished, Kilsby is looking a bit drab and grey. We need some other community project to brighten up the village in the future - and planters full of seasonal flowers and foliage might be the answer.

What we would need are groups to sponsor the planters (we hope to get a grant to purchase them but there would be some ongoing costs for plants and compost) and - even more importantly - to look after them: plant, water, dead-head and so on.

Kilsby has a lot of groups and societies. If each of them were to sign up to sponsor and look after one planter then the village would be filled with flowers and foliage. Groups of neighbours might also want to take on responsibility for a planter. We could have a competition to decide the best one each year and Kilsby would look beautiful.

So if you run a group or society in Kilsby (or even if you don't), please think about this idea and if you would like to be involved contact me, Jane George, on the number or email address given above.

I hope to hear from you.



Dear Homeowner,

I trained as an estate agent over 12 years ago and now specialise in the villages of Kilsby & Barby. I have a particular interest and knowledge of both of these villages having been brought up in Kilsby, living in Fishers Close. I went to the local primary school, played football for Barby FC for several years and also played tennis for many years at Kilsby Tennis club.


I operate as a self employed property consultant under the well regarded and recognised brand of Horts Estate Agents. This gives me the back up and support of a long established company whilst at the same time being able to offer a one to one personable and professional level of service for all my clients.

I understand that you have a choice of estate agent when it comes to selling your house. I am building a unique and specialist focus in representing property owners in both Kilsby & Barby and would very much welcome the opportunity of meeting with you when you are next considering selling your property.


You can contact me AT ANY TIME on my direct line 01788 556881 or on my mobile, 07989 404822 or email address ben.street@horts.co.uk.

Please consider me next time you have your home valued by calling 07989 404822.

Many thanks



E. ben.street@horts.co.uk
T. 01788 556881
M. 07989 404822



KILSBY COMMUNITY FREE SHOPPING BUS

DATES FOR 2016

January 11th
 February 1st
 March 7th
 April 4th
 May 9th
 June 6th
 July 4th
 August 1st
 September 5th
 October 3rd
 November 7th
 December 5th

DOOR TO DOOR SERVICE
 Pick up approx. 1.30 pm

To book your seat ring 823148

Please cut out and
keep

KILSBY NEIGHBOURHOOD PLAN

(From Terry Dougan, Tel: 822650, on behalf of the Steering Group)

Members of the Steering Group met with Daventry District Council (DDC) on 1st October to agree with the Council a process and criteria for appointing an Independent Examiner for the Kilsby Neighbourhood Plan.

It was agreed to use the services of the Neighbourhood Planning Independent Examiner Referral System (NPIERS), an organisation which keeps details of a panel of competent professionals who can act as independent examiners. DDC, jointly with the Kilsby Steering Group, drew up a specification for potential candidates, including such criteria as appropriate planning qualifications, wide experience in Neighbourhood Plan examinations, good communication skills, and design, policy and development experience.

The application to NPIERS to identify potential candidates for the Kilsby examination was sent off early in October and we received details of two candidates in November. These have been evaluated in conjunction with DDC and we hope that an appointment will be made very shortly.

Given the imminence of the Christmas holiday period, when DDC will be closed, it is unlikely that the examination will take place before January, with the examiner's report likely to take a further month to come through. Subject to the examiner's comments and any amendments which will need to be made to the Plan, it will then need to go to a meeting of the full Daventry District Council for agreement to proceed to referendum.

DDC have advised us that they think it very unlikely that the Plan will be able to go to the next full Council meeting, which is scheduled for 25th February 2016, because of the lead time required for the preparation of papers and briefing material. Unfortunately, the next full Council meeting after that is not until 18th May. The Steering Group expressed great disappointment at this protracted timescale and we will obviously do anything we can to help speed up process. It is however largely outside our control.

Assuming that the full Council agrees in May that the Plan can go forward to referendum in the village, DDC are then required to give at least twenty-eight days' notice before the referendum takes place - which all means that it could be late June/July 2016 before Kilsby residents have the chance to vote on the Plan. Given that we submitted the Plan on 24th July 2015, this is a very long timescale, but it appears that it is unavoidable because of the processes which have to be gone through.

News from Kilsby School

(From Karen Burton, mrs.burton@kilsbyprimary.net)

It has been a very busy time at Kilsby School since children came back to school after the summer break.

The school has a healthy 98 children now, the largest number we have had in a long time. The Reception children have settled in really well and have already come on in leaps and bounds!

On Monday 21st September we held a Peace One Day assembly, when every child in school released a balloon with a message of peace attached to it. We received one reply back from someone living in Lichfield, which was very exciting to think one of our balloons had travelled so far!



We had our Harvest service at St. Faith's Church on Thursday 15th October. The children brought some beautiful harvest gifts into school to distribute to some of the residents of Kilsby village. We received some lovely thank you notes and cards from the recipients—thank you for those!

Some of our children in Years 3 and 4 took part in a Tag Rugby competition at Daventry Rugby Club on Thursday 8th October. They had a wonderful day and learned a lot!

On Thursday 5th November, children enjoyed a special Bonfire lunch of hot dog sausages and chips followed by rocket lollies!

On Friday 13th November, children came to school dressed in something spotty and brought a donation towards Children in Need. We raised a grand total of £122.14, which is fantastic!

The children are looking forward to going on a special trip to see 'The Snow Queen' on Tuesday 1st December at the Royal Theatre, Northampton. Our

hardworking KSA have covered the cost of this wonderful trip for all the children in school and it is very much appreciated, as is all the hard work they put into raising vital funds for the school.

We shall be holding our annual Christmas Fayre in school on Friday 4th December at 6.00 pm. We will have the usual stalls, including 'white elephant', toys, books, tombola, raffle, refreshments, stalls run by the children and, of course, Father Christmas himself!

This year we are putting on an extra performance of our Christmas production because in the past it has been very difficult squeezing everyone into the hall. We would like to invite villagers to join us on Monday 14th December at 1.30 pm if you would like to come along and watch our performance.

The other two performances will be on Tuesday 15th December at 6.00 pm and Thursday 17th December at 4.00 pm.

On Wednesday 16th December 2015, at 10.00 am, we will be attending the Christingle service at St. Faith's Church. In the afternoon of that day, it is the children's Christmas parties when they have fun and games and a visit from Father Christmas.

On Thursday 17th December the children will have their Christmas lunch with party music and crackers.

POLICE COMMUNITY SUPPORT OFFICERS



No surgeries are scheduled for December or January.

If you need to get in touch with the PCSO team contact details are::

Daventry Rural Safer Community Team
Northamptonshire West Area
Northamptonshire Police
Telephone: 101 mobex 778002

If you need to speak to either Lorraine Humfress or Les Conopo on a non-urgent matter, you can also contact them on the mobile numbers or at the e-mail addresses below:

Lorraine Humfress Mobile 07557 778002

e-mail: lorraine.humfress@northants.police.uk

Les Conopo Mobile 07557 778119

e-mail: leslie.conopo@northants.police.uk

Archaeology at Barby Hill: the wider context (part 3)

(From Gren Hatton, Tel: 822411)

Having briefly described, in the previous two articles, how the land in the Rainsbrook Valley was populated by successive settlements over a period of 3000 years, it's now appropriate to consider the manner in which the population of Britain grew during the earliest period of our history – from the Neolithic through to the Roman period. This will help to put into context the individual early settlements mentioned above.

Population growth

It is, of course, very difficult to make any precise estimates about history in Britain before the Romans – there are no written records, and archaeological findings are still patchy and extremely incomplete. However, modern archaeobotanical research combined with archaeological fieldwork has provided insights into the ways in which the land has been shaped by human activity, so that some broad generalisations can be made:

- In the Paleolithic/Mesolithic (Early/Middle Stone Ages, approx. 10,000-5000BC), the early inhabitants were hunter-gatherers, moving around the landscape and foraging in an essentially forest landscape. Permanent settlements of any kind were rare at this period. The population of Britain at this time may have been perhaps 10,000-30,000 individuals.
- During the Neolithic period (approx 5000-2000BC), much of Britain was still covered in dense woodland. The process of forest-clearance had commenced however, using stone axes, and this period is characterised mainly by a gradual change in lifestyle, from hunter-gatherer to settled farming.
- By the early Bronze Age (approx. 2000BC) there is evidence for a more settled way of life. Fields, roads and trackways came into existence, and permanent settlements became far more common. With the change to a lifestyle based more on farming, the population of Britain began to rise, and archaeologists have estimated that it may have reached about 250,000 at this time.
- The great technical advance during the Bronze Age was the introduction of sharp metal axes, which allowed much greater areas of forest to be cleared, and opened up land – chiefly on fertile valley bottoms – for cultivation of livestock and crops. This led to a rise in population, so that by the end of the Bronze Age (approx. 1000-900BC) the population of Britain had probably increased to about 500,000.
- Once started, the process of deforestation continued – and with the introduction of iron tools it also accelerated; as mentioned above, the evidence suggests that early deforestation in the Bronze Age was mostly in river valleys, but Iron Age deforestation continued the process up the hillsides and onto the hilltops (part of the evidence for this is that most of the shift of alluvial soils from hillsides down into valley bottoms has been shown to have occurred since the Iron Age). There was a steady increase in population, which appears to have gained further momentum after about 300BC, so that by the Late Iron Age the population level may have been 1 to 2 millions (and to put this in context, you can compare it with an estimated population of perhaps 5 million before the Great Plague of 1348AD, and perhaps 3 million in the 1350s after the first outbreak of plague).
- After about 400-300BC there is increasing evidence of large numbers of settlements, each home to perhaps 100-200 individuals, and spread across the landscape at intervals of a couple of miles or so – in fact, not very different in general terms to the way in which medieval villages subsequently sprang up at similar intervals during the Middle Ages. There is also evidence for the evolution of hierarchical social structures, with warrior leaders who gradually gained in influence and importance, ruling over often impermanent federations of tribal groupings that minted their own coinage and can best be described as early kingdoms.

Against this general background, it is now possible to view the development of the Rainsbrook Valley landscape in a clearer context.

Whilst the Bronze Age activity in the valley was probably that of an isolated community, working to develop the fertile valley for cultivation, the later Iron Age and Roman settlements are clearly part of a highly organised landscape, in which communications between settlements played an increasingly important role. It is impossible to interpret any of these later communities on their own – they must be viewed as components in a highly interactive landscape.

On considering the list of the various early communities that inhabited the Rainsbrook Valley, two points in particular appear worthy of note:

- The communities each appear to have had a limited lifetime, of perhaps 200-300 years or so, before they gave way to a later community. Whether this later community represents a continuation of the same group of people in a new location, or a new group of incomers displacing the earlier group, is at present unclear.
- There appears to be a tendency for the successive communities, from Bronze Age through Iron Age to Roman period and Saxon/Danish, to move gradually further up the valley towards the source of the Rainsbrook (though there are one or two exceptions to this tendency during the Roman period). This may perhaps be merely coincidental, or it may represent increasing pollution of the lower reaches of the stream and a need to seek a cleaner source of fresh water at regular intervals.



This is unlikely to be the last word on this subject, for new discoveries are constantly being made – and even as I write this article, professional archaeologists from Cotswold Archaeology are just completing their reports on a new excavation inside the Severn Trent Water reservoir on top of Barby Hill (carried out in May 2015), to continue and complement work done by the Barby Hill Archaeological Project over the last 5 years. Members of my own Barby Hill Archaeological Project team (BHAP) were invited to view the latest findings – see the above photograph – and Severn Trent and Cotswold Archaeology both paid tribute to BHAP's pioneering efforts, stating that the latest archaeological work would never have been sanctioned had it not been for the work carried out by BHAP to demonstrate the size and importance of this Iron Age site.

However, it is sufficient to show that the quiet Rainsbrook Valley has seen a long and complex history of human occupation. Our precious heritage is all too easy to overlook, yet our lives today are still significantly influenced by what has gone before.

Gren Hatton

October 2015

KILSBY W.I.

(From Nancy Golding, Tel: 822611)

The Mad Hatter's Tea Party on 26th September was a great celebration of 100 years of the WI and we were delighted to welcome so many guests to join us for the occasion. We were greeted by a Red Queen on arrival and went through a black hole to find welcome cocktails. Then, through another black hole and we were in 'WONDERLAND'. A lovely lot of talented people had made the hall look fantastic. Everyone wore 'Mad Hats' which were much admired for their artistic creations. Johnny Tarrino entertained us with some lovely songs and got us in the mood for dancing, ending with a conga around the hall! We poured our wine from tea pots with a nice supper followed by a special cake. It was a really splendid celebration of the WI Centenary and very much enjoyed by all. (Eds. See also page 18.)

Party Animals visited us in October and brought a collection of unusual creatures to show us. There were spiders, snakes, racoons, meerkats and a fox. Some of our members seemed to enjoy having a snake wrapped round their shoulders, holding spiders, or cuddling racoons! It was a fascinating and entertaining evening.

At our recent AGM we were pleased that Sue Dobson has been re-elected as our President for the next year and most of our existing committee are willing to continue.

Four of our members recently attended the Northamptonshire Federation AGM at the Spinney Hill theatre, where we enjoyed hearing songs from the WI Choir before the formal business began. We then heard a most amusing talk by Diana Birch on running national WI Enterprises. The guest speaker was John Craven who many of us remembered from Newsround and Swap Shop and who is currently appearing in Countryfile. He was a most entertaining and lively speaker who told us about his early career as a young journalist and on TV. He is very involved with conservation and has become an ambassador for pandas in China which gives him special visiting rights to the baby pandas.

We had an interesting talk in November about the history of the Royal National Lifeboat Institution. The first purpose built lifeboat was launched in 1785 and the institution in its present form started in 1824. The organisation is dedicated to saving lives at sea and is totally reliant on charitable donations to keep going.

Wanted – we are collecting small flower baskets, bowls or containers for filling with bulbs and flowers for next year's Mother's Day stall. If you have anything which may be suitable, would you kindly take it to Diana at the village shop.

New members and guests are very welcome to our meetings – look for information on our notice board outside the village shop or check out the WI website.

**Need an
"Odd Job Man"
for your technology
with 25 years
IT experience
we can help.**

FOR YOUR:

iPad, Computer, Broadband
Mobile/Smart Phone,
Photos, Hard Disk Recorders
and so much more...

PUZZLED BY TECHNOLOGY...

What to buy?

How to set it up?

How to use all those
extra features?

Just want it done,
no problem we can do that too!



**Call Tim your local "Odd Job Man" for a FREE,
no obligation quotation on: 01788 823 759**

Tel: 01788 823759 (Kilsby) Mob: 07977 019147 Email: tim.banks@rienza.co.uk



The George, Kilsby

Telephone: 01788 822 229

www.thegeorgeatkilsby.co.uk

CHRISTMAS AND NEW YEAR OPENING TIMES



CHRISTMAS EVE

From 11:30 am OPEN ALL DAY

Food Available : Mid-day – 2:00 pm & 6:00-9:00 pm

CHRISTMAS DAY

11:30 am – 1:30 pm. Drinks ONLY

BOXING DAY

From 11:30 am – OPEN ALL DAY

Food available: Mid-day – 5:00 pm ONLY

Sunday 27th December

From 11:30 am OPEN ALL DAY

Food available: Mid-day - 3:00 pm & 6:00 - 8:30 pm

QUIZ & PLAY YOUR CARDS RIGHTS 8:00 pm

Monday 28th, Tuesday 29th and Wednesday 30th December

11:30 am – 3:00 pm & 5:30 – 11:00 pm. Food available: Mid-day - 2:00 pm & 6:00 - 9:00 pm

NEW YEAR'S EVE

11.30 am – 3.00 pm & 6:00 pm -LATE

Food available Mid-day – 2:00 pm & 6:00 pm - 8:30 pm

ROCK & ROLL BINGO QUIZ 10:00 pm



NEW YEAR'S DAY Friday 1st January

From Mid-day OPEN ALL DAY

Food available Mid-day – 4:00 pm ONLY

**SEASONS GREETINGS FROM ALL AT
THE GEORGE**

Boiler at St. Faith's Church

(From Nancy Golding, Tel:

Is there someone who would be willing to look after the boiler at St. Faith's Church? This involves setting the time switch to make sure the heating is on for services, and, most importantly, monitoring the amount of oil used and ordering supplies.

We are very grateful to Mr Brian King for his efforts in looking after the heating of the church for many years, but the time has now come for him to retire from this duty. Please contact Brian or the Churchwardens if you can help.

THANK YOU!

(From Kilsby Pre-school Committee, Tel: 824091)



A huge thank you to the residents of Kilsby for your generous donations to our 'Rag Bag' clothing collection. In one morning we raised £128 for pre-school so well done to everyone!

MAD HATTER'S TEA PARTY

(From Karen Gilmurray, Tel: 823939)



Here at Kilsby WI we've been busy celebrating the WI Centenary Year in style – first we yarn bombed our village – and the response to that was fantastic!

Then on the 26th of September we held a Mad Hatter's Tea Party! 70 guests came to Kilsby village hall to find it had been transformed - those brave enough to swallow the contents of the bottles marked 'Drink Me' were transported through a rabbit hole into a wonderland where they were greeted by Alice,

the Queen of Hearts, the Mad Hatter and the White Rabbit! A tea party was in progress where all drinks had to be poured from teapots and drunk from teacups! I'm sad to say that Alice disgraced herself by drinking straight from the teapot...

An amazing array of hats were entered into our Maddest Hat competition - our charming entertainer, the vintage style singer Johnny Tarrino, not only entertained us with great songs he also bravely judged the winning hat! To complete a wonderful evening Johnny led us in an inspiring rendition of Jerusalem as our president Sue Dobson cut into our centenary topsy turvey cake. A brilliant cake made by our very own Alice (or Jane George as she's sometimes known) - before she started on the teapot of course!



Kilsby History Society

(From Gill Mason, Tel: 822658)

Our next meeting is on Thursday 21st January, at 7.30 pm in the Kilsby Room.

The speaker is Bernard Cadogan, and the subject is:

The Shaping of Southam

Members £2.00

Non-members £3.00

All welcome

Crick Medical Practice

(From Eddie Taken, Tel: 822068)

Influenza Injections

Response this year has been very good but there are still some in the vulnerable groups who have not been vaccinated. It is not too late. If you fall into one or more of the following groups: those suffering from chronic respiratory disease, asthma, chronic heart disease, chronic kidney disease, diabetes, chronic liver disease, or chronic neurological disease; carers; those with low immunity; pregnant women; over-65s; and would like a vaccination, please contact the surgery to make an appointment.

Staff Training

The surgery will continue to close on one Wednesday afternoon every month for staff training. On these days the surgery will be closed between 1.00 pm and 6.30 pm. The dates in the next few months are 9th December, 13th January and 10th February.

Press Scares

The following headline appeared in the Daventry Express recently:-

SERVICES COULD BE CUT BY DAVENTRY SURGERIES

This has caused concern among some of our patients.

There is no need for concern as our practice operates under a different contract to that of the Daventry practices and therefore will not be affected. All services will continue unchanged.

New Drop-In Clinic for under 5's

Starting in January there will be a drop in clinic between 9.00 am and 11.00 am on the 4th Thursday of each month to discuss the general health of under 5's. The first clinic will therefore be on 28th January.

Christmas Raffle

The Patients Group will be holding a Christmas Raffle again this year in December for their medical fund and any donations for prizes would be welcome.

Gardeners' Corner

Another late winter...

Still no frosts! That's 3 years now that the first frosts have been over 10 days late. The spinach beet we sowed in August for the spring is already producing masses of leaves. I wonder what the winter will bring?

Once the frosts do hit...

Our flowers still have lots of colour, so we are just dead-heading and waiting for the first frosts. Once the frosts have hit, it will be time to tidy up the herbaceous border. Cut down the perennials, rake off the litter and give a good fork around the plants. Leave piles of some of the thick hollow stems around the garden for overwintering insects. If any plants have got too big then dig them up and split them into smaller pieces, throwing away any woody old pieces.

Start to prune roses

It is a good idea to spread the pruning of roses over the winter. If the weather is still mild then wait a month to avoid encouraging early new growth that will be damaged by the frosts. It may be best to limit early pruning to just shortening long stems to stop rocking in the winter winds. Harder pruning can then be done in the early spring when the buds are showing signs of breaking.

Jobs to do in December

Finish potting up bulbs for the spring.
Clean the paths of moss and mould.
Order any remaining seeds and plants.
Sit in the warm finishing your planting plan for next year.

Jobs to do in January

Clean, wash and fumigate your greenhouse.
Clean and sharpen your tools and tidy the shed.
Fork over round your bulbs and top dress with bonemeal.
Complete fruit tree pruning.

Times past...

From "Your Garden Week by Week", A.G.L.Hellyer, 1936:-

"January 4th week: Sow French beans for forcing: You can obtain a May crop of French beans by sowing now – five or six in each 8-inch pot filled to within a couple of inches with good loamy soil with which a little sand and leaf-mould has been mixed. Cover with a further inch of soil, water freely and place in the greenhouse at a temperature of 60 to 70 degrees."

Good Gardening!

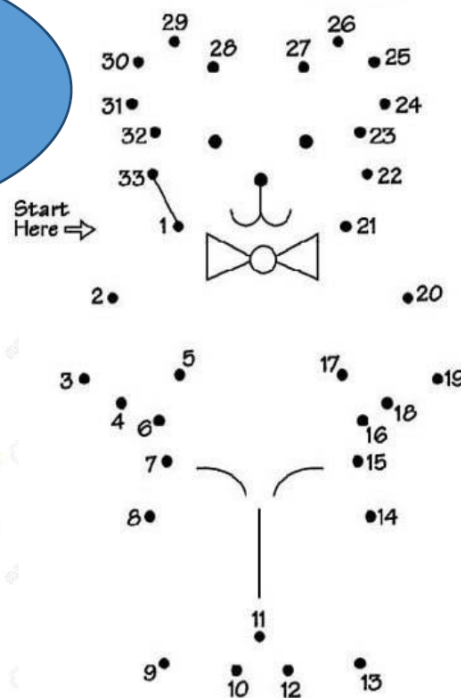
Ror Kieble

KILSBY KRONICKLE KIDS' KORNER

CHRISTMAS QUIZ

1. How many of Santa's Reindeer have names beginning with the letter 'D'?
2. In the song 'The 12 Days of Christmas', how many pipers were piping?
3. What job did Jesus' father Joseph do?
A) Carpet fitter B) Carpenter C) Caterer
4. What meat is traditionally eaten on Christmas day? A) Turkey B) Gammon C) Chicken
5. What is the missing word from this famous Christmas song: 'Ding Dong.....On High'?
A) Happily B) Joyfully C) Merrily
6. How many Wise Men visited baby Jesus?
7. Can you unscramble these letters to reveal a Christmas decoration? LESNIT
8. How many days are there between Christmas day and New Year's Day? (Not counting either of the actual days)
9. Which Christmas Carol includes the lyrics: 'Dashing through the snow, in a one horse open sleigh'?
10. In what film is it always Winter but never Christmas: A) Home Alone B) The Snowman C) A Christmas Carol?
11. What do you pull on Christmas day?
A) A balloon B) A cracker C) A muscle
12. What was the name of the boy who was left home alone in the famous movie 'Home Alone'?

PLEASE CAN YOU HELP ME
DECORATE THIS CHRISTMAS
TREE READY FOR CHRISTMAS?
THEN SEE IF YOU CAN JOIN UP
THE DOTS TO REVEAL A TOY



ANSWERS

1. Three: Dasher, Dancer, Donner
2. Eleven
3. B = Carpenter
4. A = Turkey
5. C = Merrily
6. Three
7. Tinsel
8. Six days
9. Jingle Bells
10. C = A Christmas Carol
11. B = A cracker
12. Kevin

NEWS FROM KILSBY PRE-SCHOOL

(From Kilsby Pre-School,
Tel: 824091)



The children have been working hard this term creating a beautiful wall display based on one of their favourite books - 'The Gruffalo' - and using different materials to represent the Gruffalo's prickles, eyes, warts, fur and tusks. They have also created a fantastic Autumn picture of a hedgehog using leaves and sticks collected on their nature walk in the school maze. This month we have also been learning about the festival of Diwali from a child's point of view and the children had lots of fun creating Diwali lamps and cards and painting large Rangoli patterns. The term leading up to Christmas is always a busy one. Alongside their usual learning activities, the children will be creating gifts and cards for the family and learning carols for the Nativity. Our pre-school is taking part in the Tesco Christmas Collage competition again this year and the children will all help to create a 2m x 1m collage, which will be displayed within the Tesco DIRFT site. Last year we came second and the children won a selection box each, which was given to them by Father Christmas. A huge 'thank you' to all who those who have supported our fundraising events this year. The mini-triathlon held in the summer has raised a final total of £510, so very well done to all the children who took part. More recently our 'pre-loved' sale in Barby in September raised an amazing £300 for Pre-School, and our ever-popular family photo day has also raised £66. The recent Rag Bag clothing collection in Kilsby village was very successful too - in just one morning we raised £128 for Pre-School! Don't forget, this is an ongoing fundraising project and you can still bring your bags of unwanted clothing into Pre-School and help us raise extra funds. Finally, we are also very proud to have received an award from the Parish Council in recognition of our contribution to the Litter Heroes Award. Don't miss the children's 'Keep Kilsby Tidy' poster currently being displayed at Kilsby village hall!

Are you doing your Christmas shopping online this year? Did you know that you can register with easyfundraising.co.uk. and nominate Kilsby Pre-School as your chosen charity? Then you can just log onto the easy fundraising website every time you shop, click onto the link for your chosen retailer's website and the retailer will donate a percentage of your purchase to Kilsby Pre-School at no extra cost to you. There are over 2700 retailers registered with easy fundraising so please remember us every time you shop!

Finally, we would like to wish the children, their families and all our helpers and volunteers a very merry Christmas and a happy and prosperous 2016!

Christmas 2015 Waste and recycling collections

Black bins – Over Christmas and New Year, black bins will continue to be collected as normal on their fortnightly cycle. Please make sure you recycle as much as possible as excess side waste and bins with raised lids will not be collected.

Brown bins – From Monday 21 December until Monday 18 January 2016, brown bin collections will be suspended for households in Daventry District. This will enable crews to focus on collecting extra recycling. Please refer to your collections calendar as to when your brown bin will be collected next.

Recycling boxes and food bins – these will continue to be collected weekly for all properties on their scheduled collection day.

Extra recycling

Large cardboard will be collected from Boxing Day (26 December) until Saturday 9 January inclusive. If you have large cardboard and it won't fit in your recycling box, please flatten it as much as possible and place next to your boxes on your collection day. Please do not place it inside another cardboard box. You can also put out other extra recycling for collection over Christmas. If you have more recycling than your boxes can hold, please continue to sort your items and place them into clear or white bags next to your boxes (not black or green sacks)

Real Christmas trees – Christmas trees will only be collected when garden waste collections resume district-wide from 18 January 2016.

Please put your tree out next to your brown bin on your scheduled collection day from this date, or alternatively take it to your local household waste recycling centre (see www.daventrydc.gov.uk/recycling)

Please note there are **no** parish collection points for Christmas trees in Daventry District. Any trees found in public places will be treated as fly-tipping.

Check your collection calendar – In December last year we sent you a waste and recycling calendar with collection dates for the 2015 and 2016 two-year period which we asked you to keep for future reference.

If you no longer have this calendar you can download a replacement from our website at www.daventrydc.gov.uk/recycling or call us on 01327 871100. Please note there are no changes planned to your existing collection day or schedule in 2016.

Reporting a missed bin over Christmas and New Year

Daventry District Council's offices and Contact Centre will be closed from Friday 25 December 2015 until Monday 4 January 2016. During this time waste and recycling services will continue and you can report a missed bin collection on our website at www.daventrydc.gov.uk.



Keandale.com
Professional Nails



“Bah Humbug! Look at my nails!”

Would you like yours done for Christmas?

Don't worry! There is still just enough time.

Manicure, Pedicure, Shellac, Gel nails and Artwork.

My Studio is here in Kilsby, why struggle into Town?

Give me a call to organise an appointment to suit you!

Anne.

Anne Baulch
12 Barby Road, Kilsby.
Phone: 01788 824026
Mobil Mobile: 07882 910365
Email: Email: anne@keandale.com
Fully Qualified and insured nail Technician



KILSBY UNITED REFORMED CHURCH

DECEMBER AND JANUARY NEWS FOR

KILSBY UNITED REFORMED CHURCH



Services (at 11.00 am)

December

December 6	Mr Tony Brown
December 13	Rev. Geoffrey Townsend (HC)
December 20	Carols and Readings
December 25	NO SERVICE
December 27	NO SERVICE

January

January 3	Rev. Tony Newnham (HC)
January 10	Rev. Michael Bond
January 17	Mrs Dorn Margetts
January 24	Mr Jon Heard
January 31	JOINT SERVICE AT LONG BUCKBY

Tuesday Guild (at 2.15pm)

December 8	Mrs Elaine Savage – Marzipan Fruits
December 22	Carols and Poems
January 5	Look to the Future
January 19	Major Julie House

Salvation Army Carol Concert

Tuesday December 1st at 7.15 pm. Followed by light refreshments.

Tickets £5 from Beryl on 01788 823752 or Val on 01788 822751.

Feel right
at home at
Longlands



Longlands offers a complete home from home, secure environment. A warm, friendly welcome awaits each new resident, their family and friends at Longlands in the growing market town of Daventry

- Qualified, dementia trained staff
- First class catering & freshly prepared meals
- Spacious, single rooms with en-suite facilities
- Nurse-led care
- Tailored activity schedules

Primrose place is our residential dementia suite with only 12 rooms all situated on the ground floor with access to secure gardens.

For further information about Primrose Place please contact:

0800 902 0092

or email: customercare@shaw.co.uk



www.shaw.co.uk



Things to do in December and January

Go to the Christmas Tree event

Offer to look after the church boiler

Take your children to Messy Church and/ or the church Children's Session.

Use the Guides' Christmas delivery service

Become a Parish Councillor

Go to the Salvation Army concert

Go to the Coffee Morning

Help decorate St. Faith's

Go on a Walking Group walk

Go to the school Christmas Fayre

Go to a Carol Service

Go to see the school Christmas show

Support the Planter initiative

Join the Garden & Produce Assn.

Go to the History Society talk

Donate flower and bulb containers to the W.I.



MOIRA MORRISS MEMORIALS

MONUMENTAL MASONS



**MEMORIALS IN
GRANITE, SLATE,
YORK STONE,
PORTLAND STONE
& TRADITIONAL
BRITISH STONES**

Please telephone for brochures,
further details or to make an appointment

Tel 01788 824129 or 07752 987649
www.moiramorrissmemorials.com
moira@moiramorrissmemorials.com

Contributions to the Editors

Preferably by e-mail to Chris Lomas at: ctdougan@tiscali.co.uk

or by any other computer media or on paper to:

Clare Glover, Fernside, Essen Lane (823290)

Chris Lomas, The New House, 20 Rugby Road (822650)

Laura Treacy, Withecroft House, Daventry Road (822442)

Sarah Cheney, Ashlawn House, Rugby Road (823957)

FREE

KILSBY COMMUNITY SHOPPING BUS

Monday 11th January

Monday 1st February

DOOR TO DOOR SERVICE

Ring 01788 823148 to book your seat.

Please note

**The deadline for the next issue is
Wednesday 20th January 2016**