

August-September 2017
Edition no. 117

Dates for your Diary

LATE JULY EVENT

Saturday 29th July
Tower Event

AUGUST

Thursday 3rd August
Walking Group walk

Saturday 12th August
St. Faith's SC Summer Lunch

Sunday 20th August
Walking Group walk

SEPTEMBER

Monday 4th September
Advice session about Produce Show

Tuesday 5th September
Parish Council Meeting

Wednesday 6th September
Indoor bowls recommences

Saturday 9th September
Sponsored Ride and Stride

Sunday 10th September
Annual Produce Show

Thursday 14th September
Walking Group walk

Saturday 16th September
Pre-School Quiz and Chips

Sunday 17th September
Walking Group walk

Thursday 21st September
Messy Church
History Soc. AGM

Saturday 23rd September
Film Night

Sunday 24th September
URC Harvest Service

Monday 25th September
St. Faith's Harvest Supper

Kilsby Kronickle

Also available on the Kilsby Village Website
www.kilsbyvillage.co.uk



'Watering Can Dunking Ceremony' at the allotments (see page 4). Pictured are (left to right): County Councillor Malcolm Longley, Paul Sedgeley (allotment holder), Janet Chappell (Trustee and Clerk - Kilsby Pools Land Charity), Matt Young (Grantscape), Yvonne Hibbert and Georgina Wagstaff (tenants of the grazing land), and Charles Smedley (allotment holder).

We are very sad to have to record the death of one of our longest-serving contributors, Gren Hatton, after a long struggle against cancer. Gren has been writing articles for KK on a wide variety of aspects of local history since early in 2009 and his fascinating and informative pieces will be hugely missed. However, Gren wrote a stock of articles during his last months, ready for publication in the magazine. One of these - the third part of the story of the evolution of Kilsby and Barby appears in this issue and others will appear over the coming months.

Elsewhere in this issue we have an encouraging report on progress with the establishment of a community shop and post office, and an interesting update on the Neighbourhood Plan a year after it was 'made'. There is also a piece (page 20) on proposed changes to the governance of the Fire and Rescue Service. The period of public consultation unfortunately finishes on 1st August so if you want to express your views on the proposal you will need to do so quickly.

It is good to see that Victoria Devaney is to take over the running of Playtime and we wish her well with her new role. We hope someone will also come forward to continue the work of the Kilsby Guides, a group which has offered so many brilliant opportunities and experiences to girls in the village over recent years. The current leaders are standing down and Kilsby Guides can only continue if new leaders come forward (see page 6). Here at Kronickle, we urgently need new people to join our team and, in particular, to take over the task of distributing the magazines to

our volunteer deliverers. Finally, Chris Clay is looking for more people to offer to open their gardens for the popular National Gardens Scheme event.

We also have news of the Annual Produce Show and on page 23 are recipes for items you may want to enter for the Cookery section. Other events include a Summer Lunch, annual Harvest Supper, and a Quiz and Chips evening, plus a sponsored Ride and Stride if you want to work off some of the calories! Enjoy the summer.

KILSBY PARISH COUNCIL

COUNCILLORS (from April 2017)

Name	Address	Tel	Areas of responsibility
Reg Dunn	9 Cowley Way Kilsby, Rugby CV23 8XB regandvividunn@btinternet.com	01788 823148	CHAIRMAN of the Council Highways Verges/Mowing Budget
Charles Smedley	5 The Lawns Kilsby, Rugby CV23 8YT chassmedley23@aol.co.uk	01788 822241	VICE CHAIRMAN Policy Documents Planning Committee, Cemetery
Maggie Chandler	The George, Watling Street Kilsby, Rugby CV23 8YE magchandlerpcouncil.only@gmail.com	01788 822229	Planning Committee Finance
Richard Page	14 Barby Road Kilsby, Rugby CV23 8XD richvalpage@gmail.com	01788 822480	Budget/Finances Street Lighting
Liz Rochford	Japonica, 23 Main Road Kilsby, Rugby, CV23 8XR ghillie38@hotmail.co.uk	01788 822791	Youth Liaison Post Office/shop
Sarah Stainton	Tudor Cottage, Manor Road Kilsby, Rugby, CV23 8XS sjstainton@gmail.com	01788 822477	Facebook Page School Governing Youth Liaison Cheque signatory Litter picking
Bob Gent	7 Fishers Close Kilsby, Rugby, CV23 8XH bobgent@bt internet.com	01788 823528	Planning Committee Kilsby Kronickle Rights of Way
Jenny Fisher	5 Middle Street Kilsby, Rugby, CV23 8XT jmfisher@hotmail.co.uk	01788 823027	Planning Committee Policing/PCSOs
Barbara Almond	Orchard House 22A Rugby Road Kilsby, Rugby, CV23 8XX barbara@almondconsult.com	01788 824333	Village Hall rep. Planning Committee
Richard Thompson	17 Manor Road, Kilsby, Rugby, CV23 8XS kpc.rthompson@outlook.com	01788 822035	Planning Committee Policing/PCSOs
Keith Adams	26 Hall Close, Kilsby, Rugby, CV23 8XZ keith@kilsby.net	07775 922933	Planning Committee

BURIALS - Please contact Helen Smedley, 5 The Lawns, Kilsby, Tel: 01788 822241, hsmedley@talktalk.net
HIGHWAY WARDEN - Howard Gibbs, 11 Fishers Close, howard@hgibbs.plus.com 01788 824718, 07835 308073
District Councillors: Catherine Lomax, 24 Castle Mound, Barby, Rugby CV23 8TN, Tel: 01788 890939

clomax@daventrydc.gov.uk

Ian Robertson, Tel: 07747 774712/01788 510613 irobertson@daventrydc.gov.uk

County Councillor: Malcolm Longley, Tel: 07721 824053 mlongley@northamptonshire.gov.uk

Defibrillator Checker: Lesley Loader, Tel: 01788 822246

DAVENTRY DISTRICT COUNCIL 01327 871100. **NORTHAMPTONSHIRE COUNTY COUNCIL** 0300 126 1000

Clerk to Kilsby Parish Council - Mrs Catherine Camp, 18 Kilsby Road, Barby, Rugby CV23 8TT

Tel: 01788 891184 e-mail parishcouncil@kilsbyvillage.co.uk

Website www.kilsbyvillage.co.uk

KILSBY PARISH COUNCIL

(From Councillor Bob Gent, Tel: 823528 and the Parish Clerk parishcouncil@kilsbyvillage.co.uk Tel: 891184)

Kilsby Parish Council meets on the first Tuesday of each month at 7.30 pm in the Kilsby Room at Kilsby Village Hall. Any member of the parish is welcome to attend and hear the discussion. The first 20 minutes of the meeting will be open to allow parishioners to raise any issues that they may have. The next meeting of the Parish Council will take place on TUESDAY 5th SEPTEMBER at 7.30 pm. The October meeting will be held a week later than usual, on Tuesday 10th October. Meetings will then revert to the usual first Tuesday of the month.

Since the last Kilsby Kronickle came out the General Election has been held. Chris Heaton-Harris MP was returned to his seat as the Conservative Member of Parliament. He can be contacted by email chris.heatonharris.mp@parliament.uk or writing to him at 'The House of Commons, Westminster, London SW1A 0AA' or phoning either 0207 219 7048 or 01604 859721.

Policing

The PCSOs have reported that in the last couple of months there has been one burglary in Kilsby and one incident of criminal damage. DIRFT suffered a theft of a motorcycle. The police remind you not to leave cars unlocked or with windows open during the summer weather.

Following the recent tragic death of an 11 year old boy who was electrocuted on the railway line at DIRFT, please make sure that everyone is aware of the dangers of straying onto the line.

Consultation is currently taking place on whether the Police & Crime Commissioner should take over responsibility for the Fire and Rescue Service. **(See article on page 20.)**

Website

Kilsby's new website can be accessed by going to www.kilsbyvillage.co.uk Any organisation which would like to manage its own page on the website will be able to do so, and thus ensure that the page has up to date information on it. Please let the Clerk know if this is something your organisation would like to do.

A361 Site

A number of residents from Daventry Road attended the last Parish Council meeting and raised concerns over the size of the balancing pond that has been constructed, and where its water will drain to. There are concerns that it will lead to flooding issues. A site meeting is going to be arranged with the builders and Severn Trent, so that the concerns can be addressed.

Highway Issues

The dip in the road on the A361 which was causing lorries to shake and make a noise when they drove over it has now been corrected. This has been funded by money from DIRFT 3, as has the new white lining to show drivers the correct lanes for the A5 and A361. We had hoped for Vehicle Activated Go Slow signs to be installed on the A5, but the Highways Agency have demanded such a large long term maintenance fee to cover them that DIRFT are unable to fund them.

The Ridgeway and Longdown Lane now have Weight Limit signage. This has been funded by DIRFT 3.

After a very long wait, Avant homes have now placed (rather small) signs at the entrance to Malt Mill Close telling construction traffic not to turn into the close. We hope that this has helped.

We are still awaiting the 'No HGV' signs for the end of Watling Street. These need to be illuminated, which is being blamed for the delay. Once they are in place, a meeting will be held with Watling Street residents to review the issues of parking in Watling Street.

(Eds. See also Cllr. Jenny Fisher's report on page 13.)

Community Shop/Post Office

The Community Shop Group is now being chaired by Dr Gostick with Peter Ayton as Treasurer. The group is trying to move the plans forward and has reached agreement on a preferred site and sourced a portacabin which will be fitted out with racking, and shelving suitable for use as a shop. This is a cheaper option than the previous proposal, so should be more achievable.

Once a shop is re-established the Post Office are happy to set up a Post Office facility within the building.

The Community Shop Group will be sending out a questionnaire asking for volunteers prepared to help in the shop to indicate when they may be able to spare a few hours, and the Parish Council has been asked to help provide a bridging loan. A loan has yet to be confirmed as the Parish Council needs to see a costed business plan to ensure that any loan made can in fact be repaid. It also has to seek Government approval before being able to borrow money. **(Eds. See separate report on page 11.)**

Speedwatch

Kilsby will be able to have the use of speed guns over a six week period from 29th July to 9th September, but they do need volunteers willing to be trained to use them. If you are worried about the speed of traffic through the village, please contact Barbara Almond (Tel: 824333) and offer to attend a training session. We need groups of three trained

(Cont. on next page)

volunteers to use the guns. The more trained groups there are, the more times we can monitor the traffic speeds.

Bonfires

The bonfire takes its name from the medieval bonfire of animal bones. While modern day bonfire ingredients are on the whole less gruesome, burning waste materials can cause pollution and local nuisance. There is no legislation or specific bylaws that specify times which garden bonfires can be lit, but please think of your neighbours and try to light them in the evening, when washing has been taken in. Only burn dry materials, don't burn plastics or other noxious substances, and don't leave the fire unattended or light it in unsuitable weather conditions.

If you are bothered by smoke, approach your neighbour and explain the problem. If this fails, then contact Daventry District Council (01327 871100) as under the Environmental Protection Act 1990 it is an offence for people to dispose of waste in a way that causes pollution of the environment or harm to human health.

Shooting

The Parish Council has been made aware that some village residents were sitting in their conservatory when a pigeon that had been shot came crashing down onto the conservatory roof. Although it is not an offence to shoot a wood pigeon, please consider where a bird might land, as this particular incident caused a lot of distress to the homeowner. Thank you.

If you hear shots, then you can always call the local police on 101 so they can check out the fire arms certificate to make sure that any gun is being used safely and responsibly.

Jubilee Wood

Just a reminder that a wood was planted some years ago on the east side of the A5 just before the DIRFT site. This is community woodland which anyone is welcome to use and walk in.

Grants available from A361 Development

As part of the planning process, when Avant Homes were granted consent to build 48 houses on Daventry Road, the developer had to provide some funding under various headings.

The money is being held by Daventry District Council and the Parish has to submit costed bids for items which fit under the following headings to be able to access the money:-

Allotments, Green Space, Indoor Sports, Indoor youth, Outdoor Sports, Parks and Gardens, Play Areas.

There is currently £35,000 available, with further similar sums of money available when the houses

are 50% occupied and 75% occupied. The developers think that all houses will be completed and occupied by September 2018, with about 50% occupation by spring 2018.

Please get in contact with the Clerk if your organisation has an idea about how to use some of this money, preferably with a costed proposal. The Parish Council is very keen that this money is spent in Kilsby and not kept by Daventry, so we need your help to try and get hold of it.

(Clerk - email parishcouncil@kilsbyvillage.co.uk or Tel: 8911184.)

Water for the Allotments

(From Janet Chappell, Tel: 822764)

Allotment holders in Kilsby have always had to devise ways of harvesting rain water for their crops. Now, with the aid of grant funding, a scheme has been financed to install a mains water supply which feeds troughs on the site and provides ready access to water for the allotment plots and adjacent grazing land.

The grants have been obtained via Grantscape from the Airvolution Community Benefit Fund for Kilsby (DIRFT Wind Turbines) and from the Northamptonshire County Council Empowerment Fund via County Councillor, Malcolm Longley. Matt Young from Grantscape and Malcolm Longley were thanked for their assistance at an opening 'watering can dunking ceremony' on June 12th.

Charles Smedley, one of the allotment holders, has been the instigator of the project and has guided the process which has taken over two years and cost nearly £1,800. The Poors Land Charity which owns the allotments is indebted to Charles for his efforts. A timely achievement in this dry summer. (Eds. See picture on front page.)

WALKING GROUP

(From Lesley Loader, Tel: 822246)

Sunday dates are 20 August and 17 September. These walks leave The White House (next door but one to the Chapel) at 10.00 am and are local and roughly 7-9 miles with a stop, hopefully, at a pub at lunchtime, though many of us take our own picnic.

Thursday dates are 3 August and 14 September. The September date is a week later than usual because a number of the regular walkers will be away walking in the Lake District on the first Thursday of September. On the Thursday walks we are currently following the River Avon to Stratford. We leave from The White House at the slightly earlier time of 9.30 am as some travelling is involved.

More information from lloader@btinternet.com or phone 822246.

FROM DISTRICT COUNCILLOR CATHERINE LOMAX

(Tel: 890939, 24 Castle Mound, Barby, CV23 8TN, clomax@daventrydc.gov.uk)

Community and Voluntary Sector Budget

During 2016-17, Daventry District Council (DDC) gave £160,000+ in grants to around 50 voluntary and community organisations, including £60,000 to Citizens' Advice (CAB), which dealt with more than 6000 enquiries in the past year. Daventry Area Community Transport (DACT) received £20,000, and provided more than 45,000 passenger trips by car and mini-bus, and more than 3700 bookings for mobility aids through Shop Mobility. Some 21 community groups received up to £500 for one-off events which then raised £46,000 for good causes.

Grants totalling £61,000 have already been approved for this year. A recommendation goes to full Council later this month to increase the community and voluntary sector commissioning budget from £80K to £150K for three years from April 2018.

DACT

DACT received the Queen's Award for Voluntary Service, the equivalent of the MBE for voluntary organisations. It is a very worthy winner.

Women's Tour Cycle Race

The Women's Tour Cycle Race, which started in Daventry, was been deemed a great success by DDC.

Electric Cars

Six electric charging points for cars have been set up, with further points across the district to come, but, apart from a second in Lodge Road car park, we have no information as to the other locations yet.

MESSY CHURCH

(From Nancy Golding, Tel: 822611)

Thursday, 21st September
4.00 pm - 6.00 pm

in Kilsby Village Hall

Children welcome with parents/carers.
It's art, crafts, songs, stories and eating together.

It's fun and it's free!

Police and Crime Commissioner

DDC is supporting the proposal for the Police and Crime Commissioner (PC&C) to take on responsibility for Fire and Rescue Service, and it has indicated that it would welcome PC&C also taking on responsibility for Ambulance Service. (Eds. See also page 20.)

Canal Arm

A recommendation goes to full Council at the end of the month for building part of the proposed canal arm, alongside the eastern edge of the Country Park. It is proposed that there could be possible forward funding by DDC of £8.715 million, to be reimbursed from Community Infrastructure Levy (CIL) receipts. There is considerable opposition to the canal arm within Daventry town itself.

Kilsby Open Gardens

I enjoyed Kilsby's recent Open Gardens event, which always gives an opportunity not just to admire gardeners' creativity, but also to chat to residents informally, and of course to enjoy tea and cake in the village hall!

I hope you all have a lovely summer.

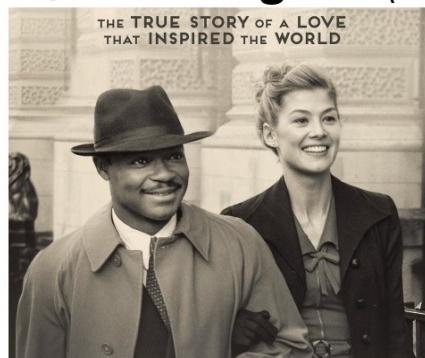
Catherine

KILSBY VILLAGE HALL FILM NIGHT

Saturday 23rd September 2017

Come and join us for refreshments at 7:30pm
Film starts 8:00pm

A United Kingdom (Cert 12A)



Tickets £6.50 each

available from Ruth Axtell 01788 823662/07814 106401
Richard Curtis 01788 822039

All proceeds to the Village Hall

Presentation supported by **Phoenix**



KILSBY WOMEN'S INSTITUTE

(From Nancy Golding, Tel: 822611)

Our summer outing in June was a visit to Hampton Court Castle which is situated near Leominster in Herefordshire. This is a 600 year old manor house beside the River Lugg with beautiful gardens.

We had a guided tour of the house, which over many years had been extended and altered. During the 20th century most of the original furniture had been sold and it had fallen into disrepair. It was rescued by an American millionaire in the 1990s who restored and furnished it magnificently to his idea of how an English country manor should look.

The gardens are not to be missed, with beautiful flower borders divided by canals, island pavilions, a wisteria tunnel, ancient trees, a maze of a thousand yews, gothic tower, waterfall, and riverside walks.

Although we had to leave a little earlier than planned because of the rain, everyone agreed this had been a lovely place to visit.

Diana Humphries represented us at the National WI Annual Conference in Liverpool. Guest speakers were Jo Fairley, co-founder of Green & Black's chocolate company and Susie Dent from Countdown. The resolutions on micro plastic fibres and alleviating loneliness were debated and voted on. The Chairman reported that 148 new WI branches had opened during the past year.

On 13th July Shirley Allen gave us an entertaining talk on 'Recycle & Renew'. She gave us lots of interesting ideas to be creative with things you might otherwise throw away – e.g. gift tags from empty tissue boxes; a doorstep from an old slipper; tablecloths, aprons or cushion covers from old curtains; vases from old jam jars. Shirley certainly made us think about what we might do with things before we throw them away.

We have also had a craft evening learning how to make Corn Dollies. Some of us went to the 'Last Night of the Proms Concert' at Holy Cross Church in Daventry, had lunch at The Tuning Fork in Houlton, and went to the Globe Theatre to see 'Much Ado About Nothing'.

Kilsby WI has been busy with lots of varied activities during the past weeks which provided something for all members to enjoy. New members and guests are always welcome to our meetings on the 3rd Thursday of each month at 7.30 pm in the Village Hall.

1st Kilsby Guides

(from Sue Curtis, Tel: 822039)



Sadly, after nearly six years of running the guides, our leadership team (that's me, Nikki and Anne) have decided to call it a day and so we are looking for someone else to take up the reins.

The guides meet every Wednesday evening at the school and over the years we have met some great girls and enjoyed some amazing activities, such as sailing, horse-riding, and of course selling and delivering the Christmas post complete with horse drawn cart! We have raised hundreds of pounds for charity and enjoyed transforming our garden at the village hall. As leaders, we have encouraged the girls to abide by their guide promise: to help their community, and to be true to themselves by developing confidence through all the weird and wonderful things we have done together, like camping, climbing and potholing; going to the ballet; making jam and home made sausages; and a wet and wild night where we all got soaked!

As you can see, it is, above all, good fun, so we hope you will come forward to ensure it continues. We will be around to help the transition and give what guidance we can. Please contact me at kilsbycurt@tesco.net or on 07764 335830 and I'd be happy to answer any questions.

ARE YOU LOOKING FOR A LOCAL, FRIENDLY, TRUSTWORTHY HOUSE CLEANER?

I currently have availability for weekly, fortnightly, monthly or one off spring cleans in Kilsby and surrounding areas from £10/hr.

Please call Sarah Crick on 07970 865425 or email sarahcrick691@btinternet.com

Can provide reference recommendations if required.

REQUEST FOR INFORMATION DEVON OX PUB

Do you remember the Devon Ox pub, which used to stand on Barby Road?

If you do, Bob Cave would like to hear from you. He is looking for information about the pub in the 1950s and early 60s. If you can help, please contact Bob at: rmcpcave@talktalk.net on 01270 589150 or 07742 175260.

ST. FAITH'S SOCIAL COMMITTEE

(From Kathy Jenkins, Tel: 822464)

Coffee Mornings

The coffee morning, on Tuesday 6th June in the Kilsby Room, was very successful and we made £65.70.

Our Coffee Morning on Tuesday 11th July in St Faith's Church made a nice change, and everyone enjoyed it. The result was £106.85.

Strawberry and Wine Evening

We also had a very pleasant time at the Strawberry and Wine Evening, at the home of Frank and Barbara Almond on Friday 7th July. It was a lovely evening enjoyed by all who were there, and we made £426.00. Thank you to Frank and Barbara for opening their home for us all to share in the evening.

Summer Lunch

There will be another Summer Lunch this year, on Saturday 12th August in the Village Hall, at 12.30 pm for 1.00 pm. The price is £10, which includes a glass of wine. Tickets are available from Margaret Dean, Tel: 822724.

If there are any village or Church friends who might like to make a savoury or sweet dish for us, we would be very grateful.

Harvest Supper

We shall be having a Harvest Supper in the Village Hall on Monday 25th September. Tickets will be £10 which will include a glass of wine, and can be purchased from Margaret Dean or any member of the Committee.

We usually have a very nice supper and sweet and expect to have a very good number of people with us. So please buy your tickets in good time and come and enjoy a very pleasant evening with the Social Committee.

Thank you

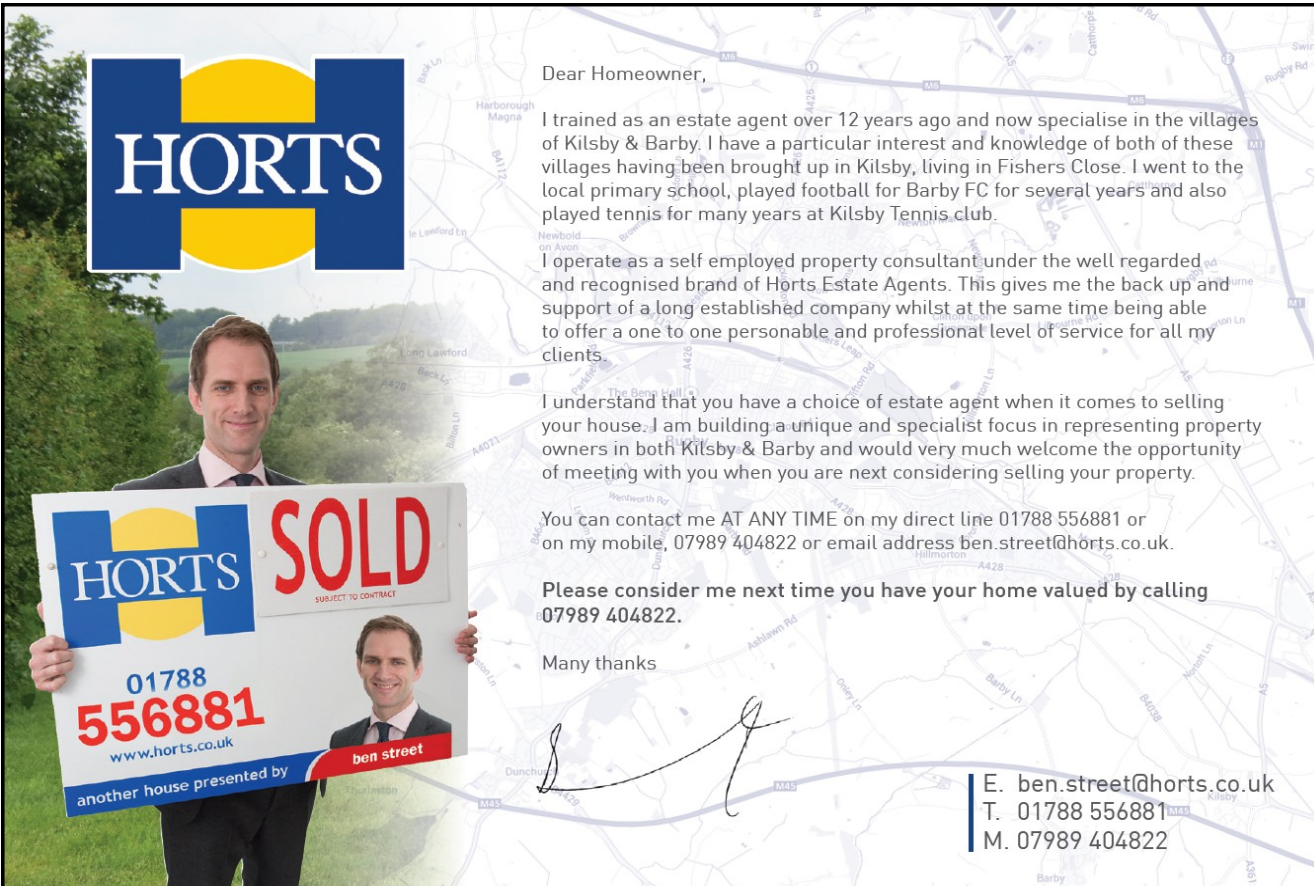
TOWER EVENT

Saturday, 29th July from 10.00 am

at St. Faith's Church

**Exhibition of Tower History
Display of Christening Robes & Vestments
Refreshments
Produce & Cake Stalls
Bric-a-brac Stall
Children's Activities**

In aid of Tower Restoration



Dear Homeowner,

I trained as an estate agent over 12 years ago and now specialise in the villages of Kilsby & Barby. I have a particular interest and knowledge of both of these villages having been brought up in Kilsby, living in Fishers Close. I went to the local primary school, played football for Barby FC for several years and also played tennis for many years at Kilsby Tennis club.

I operate as a self employed property consultant under the well regarded and recognised brand of Horts Estate Agents. This gives me the back up and support of a long established company whilst at the same time being able to offer a one to one personable and professional level of service for all my clients.

I understand that you have a choice of estate agent when it comes to selling your house. I am building a unique and specialist focus in representing property owners in both Kilsby & Barby and would very much welcome the opportunity of meeting with you when you are next considering selling your property.

You can contact me AT ANY TIME on my direct line 01788 556881 or on my mobile, 07989 404822 or email address ben.street@horts.co.uk.

Please consider me next time you have your home valued by calling 07989 404822.

Many thanks

Ben Street

HORTS
SOLD
SUBJECT TO CONTRACT
01788 556881
www.horts.co.uk
another house presented by **ben street**

E. ben.street@horts.co.uk
T. 01788 556881
M. 07989 404822

TED WORSTER

November 9th 1935 - 24th May 2017

I would like to thank everyone who came to Ted's funeral, all my family and friends and also Ted's workmates from years ago, especially the Beech Autos garage and Volvo lads. Ted would have been overjoyed at the number of people who were there. Thank you also to everyone who sent lovely cards and messages.

Also a big thank you to the Rev. Nigel and the Rev. John Stephenson for a lovely service, and thank you to Dawn for the beautiful poem she wrote. It caused quite a bit of laughter but it made it such a happy service.

Finally, thank you to everyone for their donations to the air ambulance which totalled £390. Ted was born and bred in Kilsby and will be remembered for a long time. On behalf of all my family I would like to thank everyone for a wonderful day.

Thank you.

Margaret Worster

HELP NEEDED WITH KRONICKLE

(From The Editors)

The Kronickle editorial team is in urgent need of some extra members. There are currently three of us, including Clare Glover who has been dealing with the distribution of the magazine to our force of volunteer deliverers for many years. Clare now needs to give up this responsibility and we need to find a replacement.

Neither Chris Lomas nor Laura Treacy, the other two members of the team, can take on the task of distributing Kronickle - Chris because she is already responsible for putting the magazine together and getting it printed, and Laura because she lives in France for half the year, although she acts as an editor from there using the internet.

We are keen to get some new people to join the team to bring fresh ideas and input to the magazine and, in particular, we need someone to take on the task of distributing Kronickle to the deliverers every second month. This is not a particularly time-consuming or onerous task, but it is crucially important and if someone does not come forward to take it on we may not be able to continue to produce the magazine.

If you could spare two or three hours every couple of months to help with Kronickle we would be delighted to hear from you. If you would like more information please contact Chris Lomas on 822650.

Northamptonshire Historic Churches Trust (NHCT)

(From Gill Mason, Tel: 822658)

This year's Sponsored Ride and Stride is on Saturday 9th September. It is a day out in the open air and you can plan your own route.

All sponsorship money received is divided equally between NHCT and the church and chapel chosen by you.

Sponsorship forms are available from Gill Mason, 28 Main Road, Tel: 822658.

Crick Medical Practice

(From Eddie Taken, Tel. 822068)

Staff Changes

Dr John Bolland will be leaving the practice at the end of July to take up a position at the Central Surgery where he will be working less hours. He will be greatly missed and I'm sure you would all wish him well in his new position and thank him for the excellent service he has provided for many years.

The practice is working hard to find a replacement and will be starting interviews shortly. In the meantime, a locum doctor is in process of being appointed to cover the period before a new doctor starts. The locum will be employed to cover the hours currently worked by Dr Bolland and some extra hours to meet the increase in patient numbers. Patients can therefore be assured that at least the current number of appointments will be available.

The new treatment room nurse, Louise Young has now started and will soon be able to ease the load of the two practice nurses. Louise will continue to study towards becoming a fully qualified practice nurse.

Training Days

The training days for the rest of this year will be: 13th September, 11th October, 8th November and 6th December. On these days, the surgery will close at 1.00 pm.

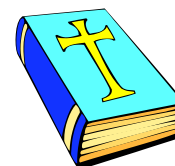
Bank Holiday

The surgery will be closed on Monday 28th August and will open as usual on Tuesday 29th.

Dr Twigg

Dr Twigg would like to thank everyone who supported and sponsored her walk around the Isle of Wight last month in aid of Macmillan Cancer Fund. She managed to complete 65 miles in 25 hours, which is no mean feat, and raised £1100.

KILSBY UNITED REFORMED CHURCH



AUGUST/SEPTEMBER NEWS

Sunday Services (at 11.00 am)

August

6th	Rev. Elizabeth Kemp HC
13th	Wally Mular
20th	Rev. Iain Mair
27th	Songs of Praise

September

3rd	Rev. Elizabeth Kemp
10th	Rev. Cecil Gill HC
17th	John Perkins
24th	Harvest - Keith Bishop. All welcome

Tuesday Guild (at 2.15 pm)

Dates to be advised.

Kilsby Garden and Produce Association

(From Sue Curtis, Tel: 822039)



The running dinner in aid of Down's Syndrome Association was held on a beautiful night and involved some great food, great wine and great company. Everyone enjoyed the 'Prosecco in the Park' and we raised £180 for Down's Syndrome Association.

Judging took place for the gardens and planters in the village on July 8th. There were a good number of entries and the judge commented on how lovely the planters all looked and said she thought we had some talented gardeners. The results will be announced at the produce show on 10 September.

The programmes for the show will be distributed shortly. It really is a fun event so why not take a look at the many different classes and enter if you haven't before. There are cookery, photography and craft classes as well as the opportunities to enter your fruit, flowers and vegetables. It is open to everyone in the village and costs just pence to enter. If you are worried about what the judges are looking for, we are holding for the first time a 'pre-show advice' session where you could learn a lot from our local garden experts, Charles Smedley and Tom Clay. It will be held on Monday, September 4 at 7.00 pm at the home of Tom and Christine Clay on Main Road, and you can get tips on how to make sure your produce has the best chance of success. There are also lots of classes for children too, with cash prizes! See page 23 of this magazine for the recipes for the cookery section.

(Cont. in next column)

Coffee Shop

Open Mondays and Thursdays 9.00 am - 12.00 pm, serving breakfasts and tea/coffee. Everybody is welcome.

Scrabble

Wednesdays at 1.00 pm in the cafe. Everybody is welcome.

Barbeque

We had a very successful barbeque. Thank you for all the wonderful help we had from our friends.

(From Diana Smith, Tel: 822197)

On [Saturday 24th June](#) we visited Winterbourne Gardens, near Birmingham University. We arrived early in bright sunshine. The gardens, developed by the Nettlefold family of GKN fame, were full of varied planting, all beautifully maintained and used by students from the University. There were glasshouses full of insectivorous plants and others with cacti and succulents. The formal gardens contained lovely herbaceous borders, full of colour. The cafe on the terrace was excellent, too! Some of us managed to look around the house with its memorabilia of the early 1900's.

The journey to our next venue, Baddesley Clinton, was along the Sparkbrook Road out of Birmingham. It was culturally very interesting! Beautiful Baddesley Clinton never fails to delight. The [sun](#) shone on the old, moated house and we had enough time to explore the borders and vegetable garden as well as the woodland walk. Some of us were able to tour the house. By now we were ready for a rest and an ice-cream before heading back to Kilsby.

BRIDGE AT THE VILLAGE HALL

(From Pam Preston, Tel: 823184)

The usual summer bridge sessions are currently under way at the Village Hall on Friday mornings between 10.00 am and 12.00 noon. They will run until term at the Percival Guildhouse starts again in September.

If you enjoy bridge do come along and join us for these summer sessions. Refreshments are available.



The Village PhysioRooms

Physiotherapy and Sports Injury Clinic

Private physiotherapy service. Treating a comprehensive range of conditions; from joint and mobility problems, to sports injuries and post-operative rehabilitation.



SARAH LITTLE MCSP BSc

State registered with 22 years of experience
Local service based at Crick Medical Practice
Registered with all major health insurers

01788 822203

www.thevillagephysiorooms.co.uk

villagephysiorooms@btinternet.com

hcpc health & care
professions
council



Playtime

Kilsby Village Hall 9.45 – 11.45am every Monday
(during Northamptonshire term time)

Toys, books and activities for all ages, babies up to school.

Specialist hairdresser

Drinks and chat for mums, dads, grandparents, and childminders.

Each session £2 per family

Everyone welcome to join in the fun!

For further information, please don't hesitate to call:

Victoria Devaney 07544 929501

Kilsby Village Hall is situated on Rugby Road where it joins the A5,
there is plenty of parking available



**Need an
"Odd Job Man"
for your technology
with 25 years
IT experience
we can help.**

FOR YOUR:

iPad, Computer, Broadband
Mobile/Smart Phone,
Photos, Hard Disk Recorders
and so much more...

PUZZLED BY TECHNOLOGY...

What to buy?

How to set it up?

How to use all those
extra features?

Just want it done,
no problem we can do that too!



**Call Tim your local "Odd Job Man" for a FREE,
no obligation quotation on: 01788 823 759**

Tel: 01788 823759 (Kilsby) Mob: 07977 019147 Email: tim.banks@rienzio.co.uk



GOOD NEWS! - Shop Update

(From Councillor Liz Rochford, Tel: 822791)

The goal of a Community Shop gets nearer - though there have been periods when things have not been able to move forward as fast as we would like. However, we are now entering a period of heightened activity and want to update you with all that has been, and is, happening.

Thank you to all of you who responded to the Kilsby Village Shop questionnaire last year (yes it really is nearly a year ago!). The results were overwhelmingly in favour of having a village shop and Post Office in Kilsby.

A committee was formally set up, meeting regularly at The George (thanks to Maggie for her hospitality and generous use of the premises), with the express goal of achieving a fully functioning shop within Kilsby. Initially chaired by Steve Kettlewell, the Kilsby Village Store Community Group (KVSCG) sought guidance from organisations such as the Plunkett Foundation and the Prince's Countryside Trust which provide support (and funding where appropriate) to many rural enterprises, including community shops. The path looked clear and straightforward. However in practise it wasn't quite like that, and things went quiet for a while at the beginning of this year.

With some members stepping down, due to family commitments, our vice chairman - Dr. Nigel Gostick - stepped up and we all put our thinking caps on. A lot of head scratching and lateral thinking had us consider a mobile shop; identifying under-used buildings (yes, there are some) and portable buildings on a suitable site. Trawling the internet for ideas from those who have walked this path before us, meant we settled on a community shop in a portacabin, and have since attended funding events to float our ideas which have received a warm welcome (google community shops in Alfrick, Burley Gate, Toppesfield or Claverdon to gain a better idea).

Having been in negotiations with the owners of the Red Lion pub (Ian, Patrick and Zoe), we now have their support to establish a community shop in a portacabin, at the rear, on their car park. A pre-planning meeting has been held with Daventry District Council and by the time you read this, the documents will have been submitted for full planning permission.

Our chairman has liaised with suppliers of used portacabins to obtain a refurbished and refitted unit - currently reserved for us. Ideally it will be timber clad; to merge with its surroundings - if you are handy with a hammer we would love you to volunteer your skills. Meanwhile, the Post Office is waiting to re-establish services in the new premises when it is up and running (thanks Andrew and Elaine for keeping them on board).

We propose to raise the funds needed through a mixture of share issues, grants from local and national organisations and loans (thank you to those individuals who have offered non-binding pledges). The parish council has broadly supported the creation of a shop and is interested in providing a bridging loan should it be necessary. Shares will be offered to villagers in a society called 'the Kilsby Shop Ltd', registered under the law with the Financial Conduct Authority as a society for the benefit of the community. It is hoped that the share prospectus will be issued within the next 3 months. Owning shares will give you voting rights.

We want to provide an information sharing afternoon and evening to the village very soon. However the summer holidays are upon us and so people will not miss out, we shall delay this until early September. It will be widely advertised so look out for posters.

Given the length of the planning process, preparing a lease, the time required to apply for grants, the preparation of the site and installation of the building, we aim to be open by the end of November.

Thank you to those people who have offered their time to work in the shop or to support in some other way. Like all good things, you can never have enough and so if you feel that you can commit to helping with a needed one-off skill - eg: painting, carpentry, cleaning/setting up, digging a trench for the soakaway, please contact us (details below). A separate list of shop volunteers will be created very soon - watch this space. We will also be looking to employ a paid shop manager with retail expertise who can co-ordinate suppliers and stock. We want the community shop to support local businesses and would appreciate help in reaching these potential suppliers - are you that person? Then let us know.

The latest estimates of set up/capital cost are in the region of £47,000. If you are minded to donate or pledge any money towards the setting up our village shop, we'd love to hear from you. If you want to speak to someone about volunteering, buying shares, offering a grant or a loan, finding out about the premises - or anything else, please contact:
Nigel Gostick - Tel: 824186
Liz Rochford - Tel: 822791
Elaine Lester - Tel: 824483
Peter Ayton - Tel: 823509
Tom Moore - Tel: 07818297900
Andrew Simpson - Tel: 823299

Kilsby Preschool



Preschool currently has spaces available for 2, 3 and 4 year olds, starting in September. Anyone wanting to use the new 30 hours funding must apply before the end of August to be eligible. Places are limited. Contact: kilsbypreschool@hotmail.com or Tel: 824091.

Kilsby Neighbourhood Development Plan (KNDP) Annual Update – 1st Year Anniversary July 2017

(From Councillor Jenny Fisher, Tel: 823027)

On 21 July 2016 over 90% of villagers voted overwhelmingly in favour of the Kilsby Neighbourhood Development Plan with 93.3% of the 508 voters returning a YES vote.

A full copy of the made plan can be accessed from the link:

<https://www.daventrydc.gov.uk/living/planning-policy/neighbourhood-planning/parish-update-map/>

by locating Kilsby on the list and clicking on 'Plan made 22 July 2016'. The Vision and Objectives can be found on Pages 19-20, with details of the Key Policies on pages 25, 31, 33, 36, 45 and 47.

There is in fact no legal obligation to update the Plan during its 15 year life. A re-write would involve a full referendum etc. similar to that undertaken in 2016. This would clearly be costly and unless there is major unexpected change in the village, unnecessary. However, Page 51 of the KNDP concerns future Monitoring and Review of the Plan's effectiveness and says that this will be done on an annual basis by the Parish Council 'which will assess how effective the Plan has been in the determination of planning applications and how it has helped to bring forward and implement projects in the area'. Additionally the Plan will be monitored with regard to any changes to national or strategic planning policy and in particular the Local Plan Part 2, which places villages into categories for planning purposes and which will be ready for public consultation very shortly.

This report seeks to comment on planning applications and on the Action Points that were identified to support the aims and policies of the KNDP (see Pages 38, 48 & 49 of the Plan). You may have already read about many of the activities and achievements relating to the Action Points in previous issues of Kilsby Kronicle, as the aim of this Report is to link activity to the KNDP. Due to space limitations it cannot cover all areas of the Plan but if you wish to comment on anything referred to or not referred to please email Councillor Jenny Fisher JM.Fisher@Hotmail.co.uk

Approach to Planning Applications

Members of the Parish Council, the KNDP Steering Group and Kilsby Action Group (KAG) undertook a training course on 4 February 2017 on how to best use the KNDP when responding to planning applications. The training was well attended. It was funded by monies given to the Parish Council by KAG. Key learning points from the training were that Parish Council responses to planning applications must be focused on planning issues without allowing emotions to influence decisions. They should be succinct and quote KNDP policies. The Parish Council has taken this on board by referring to Key Policies in our responses. We have sought to encourage infill development that is in accordance with the KNDP e.g. bungalows that do not impact on the character of the village, but have not supported developments that we deem are either inappropriate in scale, or which will detract from the character of Kilsby, which we are seeking to preserve.

In terms of effectiveness, whilst a Neighbourhood Plan is a legal document which adds weight to our views, our experience in 2016-17 to date, is that the view taken by Daventry District Council is not always consistent with the Neighbourhood Development Plan. We shall need to monitor this carefully and liaise with other villages in the district which also have 'made' Neighbourhood Plans to ensure that due weight is always given to the Plans.

No major developments have received planning approval since the KNDP was made in July 2016. The A361 development had already received approval well before this but proposed developments in Barby Road and Rugby Road and appeals that followed planning refusals have not progressed and the KNDP has undoubtedly influenced this.

The Council hopes to receive some funding as a result of the A361 development though what is termed a Section 106 agreement, which can be used to benefit the community.

Progress on Action Points To Support KNDP Key Policies K1 to K8

Action 1. *Ensuring Northamptonshire County Council (NCC) maintains public footpaths in a good state of repair by reporting any problems with stiles and vegetation.*

Councillor Bob Gent regularly reports to the Parish Council (PC) on the public footpaths around the village and for instance how DIRFT activity has impacted. The PC highlights to NCC issues such as vegetation reducing the width of the footpath along the A5 to DIRFT but unfortunately whilst we can raise issues we cannot influence the priority in getting them resolved. The PC has explored the possibility of a footpath to Barby but this is prohibitively expensive and there is no scope for funding from other sources.

Action 2. To combat the growing problem of speeding cars and HGVs through the village instigating Community Speed Checks by trained volunteers.

Councillor Barbara Almond has coordinated speed checks with the help of volunteers. Thanks to those who have helped in earlier years. Further speed checks are planned for Aug/Sep 2017 but usage of the equipment will be limited by the number of trained volunteers. More volunteers would help the checks to be more effective.

Action 3. Lobbying the Highways Authority to introduce improved signage, including weight limits at the entrances to the village.

A meeting was held with Northants County Council (NCC) representatives recently concerning the A5 and A361 entrances to the village. Various suggestions were made by councillors but many of these that we would see as effective traffic calming measures of benefit to Kilsby were not accepted by the NCC. For example, smaller 30mph "reminder" signs cannot be used within village boundaries, and a pedestrian crossing would be deemed more dangerous than helpful based on current traffic usage and speeds. However, we can expect to see more prominent 30mph speed signs at the entrances to the village.

Daventry District Councillor Catherine Lomax has had involvement in discussions concerning the impact of traffic on the A5 resulting from new housing. She has also contributed to safety discussions on the A361 which has seen the introduction of reduced speed signs along some parts of the A361 as well as white lines along the edges, (which are seen as a traffic calming measure). Catherine continues to lobby for more to be done on the A361 which is deemed a 'Red Route'.

We are awaiting the installation of weight signs at the entrance to The Ridgeway to prohibit its use by HGVs that exceed the published weight limit.

There has been ongoing discussion with Avant Homes concerning the access to the development off of the A361. The council would like to see a safe crossing option for pedestrians plus safe access for turning vehicles.

Councillor Reg Dunn attends M1 Junction 18 meetings to which DIRFT also contribute. He can therefore make us aware of any issues on the motorway and represent Kilsby at the meetings.

Action 4. Lobbying the Highways Authority to reduce the speed limit through the village to 20 mph.

A speed activated sign was installed at the Rugby Road entrance to the village a few months ago. The Parish Council would prefer the activation to be nearer the 30 mph signs but the specific site of the sign was not our decision. Further improvements to the sign will be made such as getting it to be solar activated instead of relying on Councillor Richard Thompson to change the batteries which drain very quickly.

A number of bollards have been erected on the Rugby Road/Main Road bend to prevent vehicles turning and churning up the grass. They have regularly been knocked which, whilst unsatisfactory as it takes time to get them repaired, shows there is a need for the barrier.

Reviewing the 30mph limit through the village with a view to reducing it to 20mph will continue – the sign on Main Road activates at 20 mph around school time and we will explore similar signs for other parts of the village.

Action 5: The Parish Council will seek effective prevention of HGV parking in the two lay-bys on the A5 in the village. Prohibition has little or no effect in the layby where overnight parking is currently prohibited. The lay-bys would either need to be closed, or bollards erected which would allow cars to enter and exit but not HGVs. Where there have been offending vehicles photographs have been taken and reported back to the lorry company. A letter of apology was received in one instance and more recently we have not received reports of offending vehicles.

Action 6. Encouraging commercial centre employers to advertise vacancies in the village magazine. Kilsby Kronickle continues to be supported by local businesses.

Action 7. Promoting increased reliability of the electricity supply and mobile phone networks.

It is difficult to be proactive in these areas. However, perhaps by coincidence (touch wood) power cuts have seemed fewer in the past 12 months. Mobile telephone reception can be linked to provider and various other factors. The site https://recombu.com/mobile/article/how-to-improve-your-mobile-phone-signal_M18075.html provides some tips. In my experience the handset can play a part too.

The internet site <http://ukmobilecoverage.co.uk/> will indicate mobile phone coverage for specific providers.

(Cont. on next page)

(Cont. from page 13)

Action 8. *The Parish Council will seek to ensure that new development aligns with infrastructure improvements. The Parish Council aims to work with developers to make sure that the provision of water, sewerage, electricity, broadband and medical facilities are suitable to meet the future needs of the village.* There has been discussion with Avant Homes concerning fuel provision. The company proposes to use Bulk Liquefied Petroleum Gas (LPG) for the site which is a greener option.

Jenny Fisher

Open Gardens 2017 - and 2018!

(From Christine Clay, Tel: 822373)

We thought you all might like to know the result of the Open Gardens this year. We had 175 visitors who paid £5 each, bringing in £875. Plant sales and donations added £245 to the total, making £1120 to go to the National Gardens Scheme (slightly up on last year). We have been very fortunate in having reasonable weather for each opening recently, and even the odd shower doesn't seem to put visitors off! (The money goes into a national 'pot' which amounts to nearly £3 million pounds a year and which is used to support a range of charities including, amongst other things, Cancer care and research.)

Many thanks to all who opened their gardens, supplied plants for sale and who visited and bought plants and for their donations.

For 2018, we are always looking for gardens, large and small to add to those who already open. You will not need to open every year but if we have a list of those prepared to open we can ring the changes. Why don't you think about going on the list? I think all those who have taken part over the past twenty five years we've been opening in Kilsby have very much enjoyed the experience.

Many visitors used to live in Kilsby and like to come back over the years. They are a great source of interesting tales not only about the village but also about how individual gardens and houses used to be. There are lots of very attractive gardens in the village which could be shown and I am sure the regular visitors would appreciate seeing some new ones in different parts of the village

If you would like to be involved in 2018 or for more details of what little is involved contact me on 822373 or email tomfclay@gmail.com. The date next year is likely to be Sunday 10th June.

It's a very worthwhile cause and I think you'll find it both interesting and enjoyable.

I look forward to hearing from you.

Christine Clay

KILSBY NEIGHBOURHOOD WATCH - JULY 2017

(From Phil Martin, Tel: 822700)

Here we are in the middle of summer but the weather is very changeable. When we have the very hot days it is always nice to open windows to create a draft indoors. However, when you go out, even if you intend to return in a few minutes, you must remember to close the windows again. You may be seen to leave and it takes very little time for your house to be entered and searched and your valuables taken.

Get out of the habit of leaving your car keys in a bowl by the front door. An intruder will look there first if they gain access or even reach them from the letter box.

St Faith's currently has scaffolding at the front for repairs. This has been made very secure but it also attracts attention. There have again been thefts in the county of lead from church roofs so please keep an eye on the church when passing. If you see an unusual vehicle in either end of Church Walk please make a note of the number and try to remember the description of any strangers hanging about. Do not approach them but try to remember them.

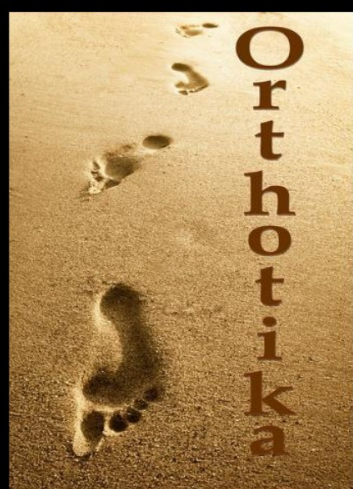
The email address for Neighbourhood Watch is kilsbynwh07@yahoo.co.uk which also goes to the same address as I put in the last Kronicle. You may find it easier to remember. If you want to join and I haven't got to you yet, please contact me and I will visit you soon.

DUNSMORE MEDICAL CENTRE

**Don't let your recovery
be an uphill
struggle...**



Help
Relief
Pain
Free
Recovery
Improvement
Treatment
Massage • PNF
Trigger Point
Acupuncture • Falls
Ultrasound • Pilates
Rehabilitation • Stretches
Tendonitis • Limping • Pain
Stroke • Low Back Pain
Whiplash • Poor Posture
Arthritis • Sports Injury
RUGBY PHYSIOTHERAPY



Orthotika Chiropody and Podiatry

- Fully qualified and registered Chiropodist/podiatrists
- Morning and Evening appointments
- Home visits (Domiciliary visits)
- Verruca treatment
- Sports, general, paediatric and diabetic assessments
- Corns and callus
- Nail surgery
- Orthotic prescription and supply
- New soothing warm wax treatment
- And more.....

Dunsmore Medical Centre, Dunsmore Avenue, Hillmorton, Rugby, CV22 5HD

01788 565044 OR 07961 378418 admin@rugbyphysiotherapy.co.uk

News from Kilsby School

(From Karen Burton, mrs.burton@kilsbyprimary.net)

A huge thank-you once again to all the parents and villagers who donated their Sainsbury's Active Kids vouchers to our school. With the vouchers collected we have been able to order bean bags, shuttlecocks, hoops, a big basic kitchen set including saucepans, frying pans, colanders, funnels, mashers, a wok, slotted turners, knives etc. and also, for the Reception class, a superb set of 4 sand and water table tubs. This scheme really does allow us to obtain some really useful items for school. Keep a look out as we will be collecting the vouchers again next year, starting sometime in January 2018, so please bear us in mind as we really do appreciate your support!

In September we look forward to welcoming our new Headteacher Mr Andrew How. Until his appointment he has been working at Springhill Academy in Staffordshire. He has popped into school a few times to meet everyone. We hope he will enjoy working at Kilsby School. Also we would like to say a big thank you to Mrs Lindsey Evans (Headteacher at Badby Primary School) who has been standing in as Headteacher at Kilsby from January to July 2017 after Mrs Freeth retired.

What a fun packed final term the children of Kilsby School have had!

Right at the beginning of the summer term the Year 3 & 4 children in Rowan class enjoyed a trip to the Think Tank Museum in Birmingham on Wednesday 7th June. They watched and participated in a 'Light Illumination Show' and explored the Museum, including hands-on inside and outside activities.



Cherry class (Years 1 & 2) went to Holdenby House for their trip on Friday 9th June. They dressed up as Victorian children and spent the day at the big house working

hard at some of the many chores Victorian servants used to have to do. They took part in workshops in the kitchen, bedroom and laundry, and in the

afternoon they presented themselves to 'her Ladyship' when they recited a poem for her. It was a really enjoyable trip and the children learnt a lot about Victorian times and the hard work the servants had to do every day.

The children in Chestnut class (Reception) had a brilliant day out at Stratford on Avon Butterfly Farm on Tuesday 13th June. They had a guided walkthrough the tropical garden



where they saw butterflies and moths feeding on fruit, and flying all around them, even landing on their heads and arms! They had the opportunity to touch and hold some creepy crawlies too! Afterwards they enjoyed their picnic lunch at the Farm and then had a break to play in the nearby play area.



Maple class (Years 5 & 6) had a fantastic time at Caythorpe Court for their 3 day residential visit from Monday 19th June to Wednesday 21st June. They were able to take part in

all sorts of exciting activities including quad biking, fencing, aero ball, high ropes, raft building, team games, and much more.

The Year 6 children have had their transition days at their new secondary schools. This year we have children going to Parker E-Act Academy, Lawrence Sheriff School, Ashlawn School, Rugby Free School, Rugby High School and Harris School. We wish them all a happy and successful future in their new schools and beyond! We shall miss them all. In September we have 16 new Reception children starting at Kilsby School. We look forward to welcoming them all and hope they will be very happy here and make lots of new friends. Miss Smith and Mrs Hopkins will have the Reception classroom ready and waiting for them!

Our Sports afternoon took place on Wednesday 12th July. All the children took part in various different races including sprint, long distance, bean bag, three legged, skipping and egg & spoon. Also some of the KS2 children did shot putt, long jump and javelin! Then as usual, there was the Mums' race, the Dads' race and even a Big Brothers' race! Everyone enjoyed the afternoon and the weather was perfect!

(Cont. on next page)

(Cont. from page 16)

The KSA held the Leaver's Disco on Friday 14th July. All the children enjoyed this popular event dedicated to the Year 6 Leavers.

We held our Summer Concert on the afternoon of Wednesday 19th July. The children put on a wonderful performance for the parents. They sang songs, played their instruments and danced too. We hope the parents enjoyed the afternoon as much as we did!

Finally on the last day of the school year, the Year 6 children all participated in a 'Leavers' Assembly' to which the parents were invited. The Year 6 children entertained everyone with a few sketches they had put together themselves, and relayed some of their memorable moments during their time at Kilsby School.

The George Kilsby

Telephone: 01788 822 229;
www.thegeorgeatkilsby.co.uk

OPEN MIC FRIDAYS 8:00 pm **EARS & PERFORMERS WELCOME**

August 4th 2017

September 1st 2017

October 6th 2017

Regular Bar Menu & Evening Menu
available until 9:00 pm.

Friday's menus now include freshly beer battered
cod, chips & garden/mushy peas.

JAZZ SUNDAY **1.00 pm - 4.00 pm**

August 6th 2017

Sunday Lunch Menu available noon to 3.00 pm

SUNDAY QUIZ **EVERY SUNDAY**

Sunday evenings 8:15 pm for 8.30 pm start
£1.00 entry per person
Teams of any size

FUNCTION ROOM AVAILABLE

Available for hire from £30.00 for celebrations,
meetings etc. Hot/cold buffet menus tailored to
suit. Please contact us for details.

Gardeners' Corner

Dry, dry, dry...

Our lawn is going browner by the minute – Rain, rain come again! But showers please, not a deluge....

Thin apples

If the natural "July drop" has not removed enough fruit then, to get good sized fruit, it is worth thinning apples to two or three fruits per spur. Often just picking off any obviously diseased fruit is enough to achieve this. If there has been strong growth then you can summer prune at the same time by reducing side shoots to 2 or three leaves, encouraging formation of new fruit spurs.

More geraniums for nothing

Geranium cuttings root really easily. You can take them any time in August. Take shoots 4 or 5 inches long (10 to 12 cm) that are not carrying flowers. Trim just below a joint and insert several round the edge of 4 or 5 inch pots of sandy compost. Put them in a shaded sheltered place indoors or out. Be mean with the watering or they will rot.

Look to your soft fruit

Prune the fruited canes of summer raspberries back to the ground and tie in the new canes.
Blackcurrants fruit next year on wood grown this year, so once you have picked the crop cut out the old fruited wood. Redcurrants happily fruit on old wood, so for them just keep the bushes open by taking out one or two of the oldest branches right back to the base each year.

Jobs to do in August

Sow hardy perennials.
Keep dead-heading.
Get ready for the KGPA Show.

Jobs to do in September

Lift onions for drying.
Take cuttings of shrubs.
Start planting bulbs for next year.

Times past...

In 'Directions for the Gardiner', John Evelyn, 1686:-

'WATERING: Cats will eat, and destroy your Marum Syriacum[#] if they can come at it, therefore guard it with a Furs or Holy-branch.'

[#]Marum Syriacum: Cat thyme, Teucrium marum.

Good Gardening!

Ron Kickle

The evolution of Barby, Crick and Kilsby from 1750 to 1900 (Part 3)

(From Gren Hatton)

Continuing our exploration of the factors affecting social growth and development in our local villages, we turn our attention in this issue to the arrival of rail transport, and its competition with the turnpike roads and canals.

In 1821 an Act was passed for the Stockton and Darlington Railway. It was the distant tolling of a bell destined to ring in change throughout Britain – and nowhere was more affected than Rugby and Kilsby. By 1831 plans were afoot to construct a railway from London to Birmingham, which provoked a frightened response from the turnpike owners:

Northampton Mercury – 5th February 1831

A Meeting of the Trustees of the Turnpike Road from Dunchurch to Hillmorton in Warwickshire to Duston Northamptonshire will be held at the Fox and Hounds, at Harleston, Northamptonshire, on 14th February, to consider objecting to the projected Railway from London to Birmingham and adopting such measures as may appear expedient — Also of considering the best mode of paying off the sum of £1200, secured by mortgage of the Tolls arising on the said Road, the same having been called in.

In the 1820s, the Trustees of the Northampton-Dunchurch Turnpike had taken out a mortgage of £1200 on the turnpike tolls – probably to cover the unforeseen costs of macadamising, which they had been forced to do in order to compete with the canals. In 1831 this mortgage was suddenly called in by the lenders (fearing the demise of the toll road system due to the increasing threats from canals and railroads, and realising that unless they foreclosed the mortgage they would lose their money).

Livestock transport via canal and railway

The rising competition between turnpike, canal and railway can be judged from reports such as these:

Northampton Mercury - Saturday 24 July 1847

A truck, carrying a bull to the show, took fire in consequence of a cinder from the engine falling upon straw litter that had been placed in the box, contrary to the rules. The accident occurred in Kilsby Tunnel. The poor animal was roasted alive, and a boy in the truck narrowly escaped the same fate.

Leicester Journal - 4 April 1851

THE GRAND JUNCTION CANAL COMPANY, adding to their business the conveyance of cattle to London, are prepared to convey sheep, lambs, swine and calves from the wharves and loading-places on the Grand Union Canal to London or the neighbourhood. Stock will be taken on board the boats at any canal wharves, and at the stations of the Midland Railway. The Grand Junction Canal Company guarantee the safe delivery of cattle thus conveyed, charges for conveyance far below the cost of driving by road, while the time for the canal journey will be under a third of that for driving.

Northampton Mercury - Saturday 28 August 1852

On Wednesday morning, a luggage train entered Kilsby tunnel on its way to London. Some beast trucks were attached, and one of the beasts got out of a truck. Three or four trucks passed over it and cut it in several pieces.

The loser in this battle was the turnpike roads – priced out by cheaper and faster transport via canal and rail, the income from the turnpikes steadily dwindled after the 1840s, and in the 1870s the Turnpike Trusts were dissolved and their tollgates and fencing were sold at auction, mostly to local farmers.

The battle for livestock transport between canal and railway continued for some time, but the canal continued to offer the best solution. The effects were felt in terms of reduced numbers of sheep and cattle travelling by road – and village inns that had prospered from drovers' traffic began to suffer.

The social effect of railways

Access to railway stations provided villagers with rapid and cheap access to towns and cities. In general, the effect of this on village shops and businesses was positive; exposure to new fashions led to demand for all kinds of goods, and the number of village shops increased significantly during the mid-1800s – particularly in Crick, which had the double benefit of easy canal access and a choice of two nearby railway stations, initially at Welton and subsequently at Crick and Kilsby station.

Between 1835 and 1838, the construction of Kilsby railway tunnel had a massive effect on Kilsby village. Over 1250 navvies were quartered in and around the village, and alehouses and shops flourished. The immediate effect was to create scores of lodging-houses through the village, and every available room became a source of income – but this was short-lived, and by the 1840s the railway was running through the tunnel, but Kilsby itself had no station. It was not until the opening of the Northampton line in the 1870s that Kilsby finally gained

access to the railway, via Crick and Kilsby Station at the A5/A428 junction. In retrospect, we can see that Kilsby failed to capitalise on its early links with the railway.

Excursion trips became increasingly popular during the later 1800s – special trains were organised to horse-race meetings and other events, and travel to seaside destinations became a popular function for church and chapel outings. For village folk, such occasions provided much-needed variety from the close routine of village life.

The decision to develop Rugby into a major railway junction had far-reaching effects. From a population of 1500 in 1800, Rugby doubled in size every twenty years, reaching 25,000 by 1921. This led to Rugby becoming an industrial centre, and by the early 1900s several major electrical and mechanical engineering works were based in the town.

This in turn led, in the period 1910-1930, to many skilled farm-labourers being attracted to work in the new factories by the offer of better pay; this went down badly with the local farmers, who lost many of their most reliable workers – and Kilsby was certainly one community in which this effect was keenly felt.

Persistence of weavers in Crick

The parish registers reveal that many local communities of cottage-based weavers lost their livelihoods in the 1790s, undercut by the new factories of the Industrial Revolution. In Kilsby, for example, the registers record dozens of pauper deaths among weavers in the period 1790-1810.

Strangely, the census returns show that there was still a large community of weavers in Crick in the late 1800s – somehow, they had escaped the fate that destroyed the similar communities in Barby and Kilsby a century earlier.

There is no obvious explanation for this anomaly – the most likely interpretation is, that Crick had managed to flourish thanks to its links by road and canal and rail, and that the relative affluence of the village somehow acted to support this community of artisans.

Summary

Over the last three issues, I have used newspaper reports as a major tool for exploring the different ways in which social growth occurred in Barby, Crick and Kilsby during the period from the mid-1700s to the early 1900s. It is clear that study of these early news media is a valuable tool for social research – and I have no doubt that other historians will carry out similar studies on their local communities in years to come.

Gren Hatton (May 2017)

Village Hall Open Garden Teas

(From Julie Bunyan, Tel: 823707)

Many thanks to everyone who donated an amazing selection of cakes and came to the Open Gardens Teas at the Village Hall. We had a steady flow of visitors and raised £467 for the hall.

We would also like to thank everyone who volunteered their time to help on the day.

Kilsby History Society

(From Gill Mason, Tel: 822658)

The AGM will take place on Thursday 21st September at 7.30 pm in the Kilsby Room. This is an important meeting as we have to appoint a new secretary and treasurer. Failure to do so could put the future of the society in jeopardy.

The formal part of the meeting will be followed by a presentation from the research group who have been trying to find out about some of the farms in Kilsby.

St. Faith's Church

Everyone is welcome to any or all of the services at St. Faith's which start at 11.00 am every Sunday as follows:-

1st Sunday in each month - Morning Worship with hymns

2nd Sunday “ “ - Holy Communion 'said' service, a quieter more reflective service.

3rd Sunday “ “ - Morning Worship with hymns

4th Sunday “ “ - Holy Communion with hymns and with a sung setting of the Communion led by the choir.

KILSBY BOWLING CLUB

(From Pauline Dalton, Tel: 822719, and
Brian Rettie, Tel: 824196)

The Club meets every Wednesday evening at the Village Hall, 7.00 pm to 9.30 pm – at least it will do from September 6th – we are currently having our summer break.

The season just gone has been reasonably successful; we did well in our local 'friendly' league against seven other local villages. We didn't come out top of the table but we didn't get the wooden spoon either. We acquitted ourselves well against the stronger clubs.

We currently have a good basis of members so life is looking quite rosy at the moment.

Earlier in the year, we hosted our Friendly League's AGM and social which over 70 players from the league attended.

Kilsby Church 100 Club

Proceeds in aid of Church Restoration
(From Pam Preston, Tel: 823184)

In July 1999, Kilsby Church launched the 100 Club as part of the Restoration Appeal. The Club started in September that year and is still going strong.

Regardless of our individual beliefs, the preservation of this part of our local heritage should be of interest to us all.

Once again we are coming to the last month of the 100 Club. Since it started, the 100 Club has made approximately £2600 every year, thanks to its members, who pay £5 per month, with the prospect of winning a cash prize. Unfortunately we have never achieved 100 members, and this year we have lost members due to ill health, moving away, or, unfortunately, departing this life. The draw now takes place on the last Thursday of the month in the local café, when the numbers are pulled out randomly. There are two monthly prizes and a quarterly prize on the following third month. Winners are printed in the church newsletter.

If you do not belong, why not contact one of the names listed below, who will give you more details. If you already belong please could you let us know by the end of August or the start of September if you wish to continue, as monies are then due. You can pay by cheque, cash, or standing order.

Miss P Preston	-	Tel: 823184
Miss G Mason	-	Tel: 822658
Mrs N Golding	-	Tel: 822611

POLICE AND CRIME COMMISSIONER LAUNCHES PUBLIC CONSULTATION ON CHANGES TO THE GOVERNANCE OF THE FIRE AND RESCUE SERVICE



The Office of the Northants Police and Crime Commissioner has recently launched a public consultation regarding proposals for the governance of Northamptonshire Fire and Rescue Service to transfer from the Fire Authority which currently sits in Northamptonshire County Council, to the Police and Crime Commissioner, who would therefore become the Police, Fire and Crime Commissioner. There is a short animated film and leaflet to explain the proposal - both can be viewed by visiting www.northantsfireproposals.co.uk

Stephen Mold, Northants Police and Crime Commissioner said: "Northamptonshire has led the way in demonstrating how emergency service collaboration can help to increase efficiency and effectiveness, and I'm determined that we build on this work to continue to create a safer county.

"Bringing the Police and the Fire and Rescue Service under a single governance model will save significant amounts of public money which we will reinvest into increasing frontline services.

"We will increase funding into the frontline by sharing premises and combining administrative functions and also potentially increasing the amount we ask the public to pay by only 3 pence per week.

"The new governance proposal will enable us to make quicker strategic decisions and increase our preventative work across both police and fire areas while giving the public a level of transparency when it comes to spending by the Fire and Rescue Service that hasn't been available under the previous governance model.

"Having reviewed the business case for this proposal, I'm confident that a change in governance is in the best interests of everyone in Northamptonshire. However, we want to hear from as many people as possible in the county around their views and concerns, to ensure they are accurately represented as we move forward"

The Commissioner is really keen to hear your views and those of your family and friends on this proposal. To find out more and complete the online survey please visit www.northantsfireproposals.co.uk. The consultation will run until Tuesday 1st August 2017 and is open to all residents of the county. A postal survey or if you require it in easy read this is available by contacting 01604 888113

Cory's Car Repairs

Independent Automotive Specialists



100.0% would
recommend us

100.0% would
visit again

the
Good Garage Scheme® 

**Looking to get your vehicle serviced or repaired in 2016?
Consider using one of the highest customer rated garages in
Rugby!**

Free vehicle collection and delivery from Kilsby

THE **GOOD GARAGE** GUIDE

Ranked #5 of 550 in the West Midlands on Honest John's Good Garage Guide



"Cory is an absolute gentleman. I would recommend him to anyone, but particularly to lady drivers, as he was most helpful in explaining the problem I had."



"What a revelation! A garage that you can trust. Not believing the main dealer's diagnosis and quote, I sought a second opinion. Cory's found the real fault and fixed it, and at a fraction of the main dealer's quote! I felt like a valued customer on my first visit! Cory's has got to be experienced to be believed. A real blast from the past - honest, trustworthy, knowledgeable, excellent customer care and a real passion for what they do. I could not recommend them more highly."

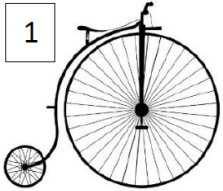
**Cory's Car Repairs is a Local Business built on traditional values.
Please take a look at the independent reviews on the Good Garage
Scheme and Honest John websites.**

Tel: **01788 540776**
Unit 16 & 17 Arches Business Centre,
Mill Road,
Rugby.
CV21 1QW

KILSBY KRONICKLE KIDS' KORNER

How many of the random objects below can you identify?

Fill the letters of each word in the blank spaces below



1. _____



2. _____



3. _____



4. _____



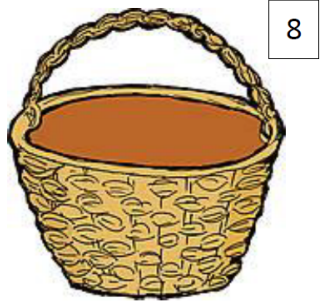
5. _____



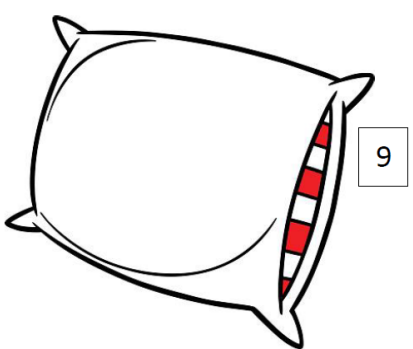
6. _____



7. _____



8. _____



9. _____

- Answers
- 1) Penny farthing
 - 2) Alarm clock
 - 3) Whisk
 - 4) Ballet shoes
 - 5) Sun glasses
 - 6) Slide
 - 7) Eiffel tower
 - 8) Basket
 - 9) Pillow

RECIPES FOR COOKERY SECTION OF THE VILLAGE SHOW (see page 10)

BAKEWELL TART

Sugar paste

200g	Soft flour
120g	Butter
50g	Caster Sugar
1	Medium egg

Method:

1. Lightly rub flour and butter to a sandy texture.
2. Mix the sugar and egg together until dissolved.
3. Gradually incorporate the flour and butter and lightly mix to a smooth paste. Cover and rest in the fridge for twenty five minutes before use.

Frangipan

100g	Butter
100g	Caster Sugar
10g	Ground almonds
10g	Plain flour
2	Medium eggs at room temperature
50g	Raspberry jam
50g	Apricot jam
50g	Icing sugar

Method:

1. Cream the butter and caster sugar till white, gradually beat in the eggs.
2. Sieve the flour, mix in the almonds and add to the butter mixture.
3. Roll out the rested pastry 2 mm thick. Line an 8 inch flan ring with $\frac{3}{4}$ of the pastry.
4. Prick the bottom with a fork.
5. In the bottom spread the raspberry jam then the frangipan mixture.
6. Cut the remaining pastry into thin strips $\frac{1}{2}$ cm width. Arrange neatly on top of the frangipan in a criss cross pattern. Trim off the surplus paste.
7. Bake at 200°C or 400F or gas mark 6 for 30 to 40 minutes.
8. Brush with hot apricot jam, when cooled brush all over with very thin water icing made from the icing sugar.

SHORTBREAD BISCUITS

225g unsalted butter, softened, plus extra for greasing
 110g caster sugar, plus extra for dusting
 225g plain flour, plus extra for dusting
 110g corn flour
 Pinch of salt

Method

1. Lightly butter 2 trays, or line with baking parchment.
2. Put the butter and sugar into a large bowl and cream together, using an electric hand-held whisk or wooden spoon, until light and fluffy. Sift the flour and cornflour into the bowl, add the salt and mix together until smoothly combined. Tip the mixture out onto a lightly floured surface and knead into a soft dough.

3. Roll out the dough between 2 pieces of baking parchment to a thickness of 1 cm. Prick the dough all over with a fork and cut into triangles or whatever shapes you like, using a knife or a biscuit cutter. Re-roll the scraps once to cut more (if you re-roll too many times the dough may start to get greasy). Put the shortbreads on the prepared baking trays and chill for at least 30 minutes.
4. Meanwhile, heat your oven to 170°C or 338F, gas mark 3.
5. Bake the shortbread for about 20 minutes, until just turning golden brown at the edges. Leave on the baking trays for a few minutes to firm up slightly and then lift the shortbreads onto a wire rack. Dust with caster sugar and leave to cool. They will keep in an airtight container for 3-4 days.

FOCACCIA

Originally from Liguria, this delicious bread is made all over Italy in various forms.

10g	Yeast dried or fresh
300ml	Tepid water 35C
500g	00 strong flour or similar strong flour
6g	Salt
75g	Olive oil for dough
75g	Olive oil to finish dough

To finish: Sea salt; Rosemary sprigs.

Method

1. Mix the 75g of olive oil, water and yeast together.
2. Sift the flour and salt, make a well in the flour and gradually mix in the liquid.
3. Turn the dough out onto a lightly floured table; knead for ten minutes, until you have a smooth dough which no longer sticks to your hands.
4. Oil a bowl and place the dough into the bowl, cover with cling film, leave to prove for approximately one and half hours, or until double in size.
5. Knock back the dough; knead for a further two minutes, leave to rest for ten minutes.
6. Oil a baking tray or similar (40 x 30 cm is perfect and about 2.5 cm deep). Place the dough in the tray and press it out to the edge. Cover with a large plastic bag (a carrier bag is ideal) and leave to prove. This will take about thirty minutes.
7. Heat the oven to 200C /400F, gas mark 6.
8. After the bread has proved, push a floured fingertip into the dough evenly to make indentations. Sprinkle with the sea salt and push the rosemary leaves into the dough. Bake for 25-35 minutes or until the top is crusty, and the base sounds hollow when tapped, then drizzle with the remaining oil and leave for two minutes.

Things to do in August and September

Join the Kronickle editors

Come forward to run the Guides

Offer to help with Speedwatch

Go to the Summer Lunch

Go to the Quiz and Chips Evening

Go to the Harvest Supper

Go to the History Society AGM

Put forward a project for the A361 development money

Go to the Village Hall Film Night

Join in the Sponsored Ride and Stride

Enter/go to the Annual Produce Show

Offer to help the Community Shop

Offer to open your garden for the NGS next year

Go to the bridge sessions

Go to the pre-Show advice session

Take up indoor bowls

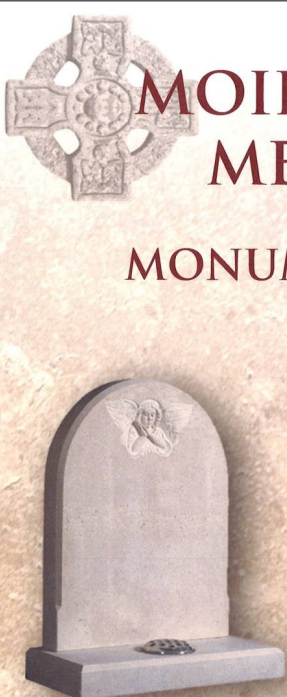
Join Neighbourhood Watch

Comment on the proposal re. Fire and Rescue Service

Go on a Walking Group walk

Contributions to the Editors

Preferably by e-mail to Chris Lomas at: lomdoucd@gmail.com
or by any other computer media or on paper to:
Clare Glover, Fernside, Essen Lane (823290)
Chris Lomas, The New House, 20 Rugby Road (822650)
Laura Treacy, Withecroft House, Daventry Road (822442)



**MOIRA MORRISS
MEMORIALS**

MONUMENTAL MASONS

MEMORIALS IN
GRANITE, SLATE,
YORK STONE,
PORTLAND STONE
& TRADITIONAL
BRITISH STONES

Please telephone for brochures,
further details or to make an appointment

Tel 01788 824129 or 07752 987649
www.moiramorrissmemorials.com
moira@moiramorrissmemorials.com

WANTED

**Volunteers to lead 1st Kilsby Guides
(see page 6)**

**People to join Kronickle editors and to take over
distribution of KK
(see page 8)**

**People willing to open their garden for NGS
(see page 14)**

**Information about the Devon Ox pub
(see page 6)**

Please note

**The deadline for the next issue
is Wednesday 20th September**