

October-November 2022
Edition no. 147

Kilsby Kronickle

Also available on the Kilsby Village Website
www.kilsbyvillage.co.uk

Dates for your diary

October

Saturday 1st October

Decorating St. Faith's for Harvest

Thursday 6th October

Walking Group walk

Thursday 13th October

WI Meeting AGM

Sunday 16th October

Walking Group walk

Saturday 22nd October

Art Exhibition

Sunday 30th October

BST ends. Clocks go back

November

Thursday 3rd November

Walking Group walk

Friday 4th November

Closing date for Christmas Tree

Drawing Competition

Thursday 10th November

WI Meeting

Thursday 17th November

History Society Talk

Saturday 19th November

St. Faith's SC Quiz

Sunday 20th November

Walking Group walk

Tuesday 22nd November

Garden Association AGM

Saturday 26th November

Lantern-making workshop

Village Hall Cinema

Early Notice

December

Saturday 3rd December

Christmas Tree Lights Switch-on

Tuesday 13th December

St. Faith's SC Christmas Coffee
Morning



We have been saddened in the last few weeks by the death of Queen Elizabeth II, whose 70 years on the throne we were celebrating so recently. We wish our new King, Charles III, a long, happy and successful reign.

Our banner picture this time was taken at the Village Fete on 28th August and we have lots more photographs (taken by Rosemary Gibb) of this event in colour on pages 12 and 13. It was a lovely day and great to see so many people out and enjoying themselves. Thanks to all who organised it and helped on the day.

Elsewhere as we move towards winter we have news of plans for this year's Christmas Tree event and of the usual drawing competition for children (page 21), as well as of lots of events, including bowls evenings, various talks, a quiz, another Village Cinema film, and an exhibition by the Kilsby Art Class.

At the same time as so much positive news about what is happening in Kilsby there are some very worrying notes about lack of support for some important village activities. Councillor Weston reports that no new volunteers came forward to help with Speedwatch this year, putting a heavy burden on the small group involved in this and meaning that we might not be able to have Speedwatch sessions at all next year, even though the issue of speeding traffic is clearly important to many, if not all, of us in the village. The Shop is still seeking volunteers to work there and the Community Café is still looking for people to give just a few hours a month to help out - both after many months of asking.

It is also very concerning to read in Trish Brown's piece about the Village Shop (pages 14/15) a stark warning that this valuable - and valued - facility, which people have worked so hard to set up and to run will not be able to keep going if more villagers do not use it regularly. The Shop is invaluable to those who don't have easy access to transport but, as Trish says, all of us will probably need it at some point in our lives and it would be a huge loss to the village were it to fold.

Life is increasingly busy and hectic with many calls on everyone's time. But we should all be prepared to support things which are important to the village by using them and, where possible, giving our time to help them. The community spirit in Kilsby and the many organisations and activities which spring from it have always been one of the village's main asset and what has made it such a lovely place to live. Let's all do what we can to help.

KILSBY PARISH COUNCIL

September 2022

COUNCILLORS

CHAIRMAN

Howard Gibbs

11 Fishers Close
Kilsby
CV23 8XH01788 824718
hgibbs@kilsbyvillage.co.ukEmployment/staffing:
School Governor Liaison

VICE CHAIRMAN

Clive Thompson

2 Essen Lane
Kilsby
CV23 8XQ07769 586980
Clive.thompson@kilsbyvillage.co.ukPolice Liaison Representative
Urban Meadow Project
Employment/staffing:
Neighbourhood Development
plan.

Bob Gent

7 Fishers Close
CV23 8XH01788 823528
bgent@kilsbyvillage.co.ukPlanning Committee
Parish Path Warden

Ian Massey

15 Essen lane, Kilsby
CV23 8XQ07764 254476
imassey@kilsbyvillage.co.ukPlanning Committee:
Website Support
Internal Financial Control
Budget; NDP

Michael Margetts

3 Paddock Court
Rugby Road
Kilsby CV23 8XX01788 824195
07773 768320
mmargetts@kilsbyvillage.co.ukRecreation Ground (Chair)
Planning Committee
Employment/Staffing

Robin Nicholls

Mews Cottage, Ashby
Road, Kilsby
CV23 8UZ07807 694524
rnicholls@kilsbyvillage.co.ukPlanning Committee
Employment/Staffing

Caroline Haycock

18 Cowley Way
Kilsby
CV23 8XB07801 492830
chaycock@kilsbyvillage.co.uk

Facebook/Social Media

Oliver Houlton

Yadran
10 Rugby Road
Kilsby
CV23 8XX07738 356413
ohoulton@kilsbyvillage.co.uk

Ian Weston

12 Fishers Close
Kilsby
CV23 8XH01788 823332
07587 143939
iweston@kilsbyvillage.co.ukPlanning Committee
Highways Warden
Speedwatch
Cemetery environs

Will Bridges

Laithe Stowe
Nortoft Lane
Kilsby
CV23 82P07932 415815
wbridges@kilsbyvillage.co.uk

Litter

VACANT SEAT

WEST NORTHANTS CLLRS

Rosie Humphreys

07890 112504
rosie.humphreys@westnorthants.gov.uk

Alan Chantler

07730 986352
alan.chantler@westnorthants.gov.uk

Malcom Longley

07721 824053
malcolm.longley@westnorthants.gov.uk

CEMETERY ADMINISTRATOR—

Please contact

Phil Martin

28 Hall Close
Kilsby CV23 8XZ01788 822700
07881 271768
cemetery@kilsbyvillage.co.uk

DEFIBRILLATORS

Mrs L Loader (Phone Box)
Mike Dowson (Village Hall)01788 822246
01327 22 07 22

KILSBY PARISH COUNCIL

(From the Chairman, Howard Gibbs
hgibbs@kilsbyvillage.co.uk)

What a great summer we had this year and I hope everyone had a great time and didn't get too sunburnt. Now Autumn is upon us, and the gardens are going to sleep for a few months, we need to look forward to next year and what we as your Parish Council are going to do for you around our village.

I obviously mustn't forget the passing of H.M Queen Elizabeth II, and look forward to our new monarch H.M. King Charles III, I'm sure we would all want to wish him and the Queen Consort well in the coming years.

Below I have again listed a few items for your interest and also for you to have an input into what you want to see around our village. We do rely on everyone giving input so come on we need your help.

Summer Fete

I understand that the Summer Fete was yet again a great success and I hope everyone who attended had a really good time. Thank you to the Committee for doing such a great job, I know it is a lot of hard work for you, but the end results must be pleasing to you all. We look forward to next year, 2023, and to seeing some of our village organisations getting some benefit from it also.

Speed Watch

Councillor Ian Weston organised another Speed Watch campaign and spent many tiring hours on the A361 gathering car registrations of those who completely ignore the speed restrictions and also our new Vehicle Activated Sign. Whilst Ian has had good support in the past, this time he found it difficult to raise interest in giving him a hand. If we really do want to try and slow the traffic down around the village, he needs support from us all. It will take up very little of your valuable time (an hour each time). Come on everyone, let's show some interest and give Ian a helping hand next time. Ian can be contacted by email on:
iweston@kilsbyvillage.co.uk.

Crick Solar Farm

Community presentations were held around the area and I do hope some of you managed to go to hear what was going to happen, I will endeavour to keep you updated via the KK and also our website and social media platforms will carry information on what is happening as things develop.

Parish Council Annual Budget.

As mentioned in my last article, the council are looking for suggestions as to what we can do around the village for all of you to benefit from.

We will be looking at next year's budgets and **what resources we have to do some projects and would really like YOUR input and suggestions**. So, if you **have** any ideas please contact either myself hgibbs@kilsbyvillage.co.uk or our Clerk, Emma Gibson, at parishcouncil@kilsbyvillage.co.uk We would be pleased to hear from you.

Neighbourhood Development Plan

In my last article for the KK, I mentioned the Plan has now been completed and a copy of this can be seen on the Council section of the Village Website. Our village shop may have a few copies left for anyone interested in having one.

Inconsiderate Parking

On numerous occasions throughout the year councillors receive emails from parishioners complaining about inconsiderate parking around the village. The main area for concern is around the school during school start and finish times. It is unacceptable and totally inconsiderate for people to park in front of driveways, on zig zag lines and across access to parishioners' homes. I understand getting your little ones to school is a priority, but please think before you park and be considerate to residents of Manor Road and adjoining roads. Moan over.

Councillor Vacancy

Unfortunately, one of our councillors, has found it necessary to resign from the council, because of work commitments, leaving a vacancy to be filled. If you have any spare time and want to get involved with what happens around your village, please contact either myself or our Clerk, Emma (details above), who will be pleased to hear from you. The Clerk can also provide you with more information about the role.

Well, that's it from me on this occasion, I hope you found the above of interest and look forward to hearing from you all soon.

Howard Gibbs
Chairman Kilsby P C

KILSBY OIL CLUB

The next order points for the Oil Club are:
Friday 11th November and Friday 6th January.

We will be open to receive orders for nine days, closing a week on the Sunday following the announcement. Members will be advised of the price and delivery dates when the buying process has been completed early the following week.

Anyone interested in joining the Club, or helping out with the ordering process, should contact kilsbyoilclub@gmail.com

FROM WARD COUNCILLOR ROSIE HUMPHREYS

(email: rosie.humphreys@westnorthants.gov.uk Tel: 07890112504, 43 West End, West Haddon NN6 7AY)

What a tumultuous month September has been with the death of our longest serving monarch. It's hard to imagine anyone so globally respected and loved as our late Queen and the outpouring of sadness and tributes since the announcement of her passing has been remarkable. One wonders what the third Carolean age will bring – whether, like the second Elizabethan age, it will be characterised by immense technological and social change.

In one of her Christmas Day broadcasts the Queen memorably commented: "It's worth remembering that it is often the small steps, not the giant leaps, that bring about the most lasting change." These words of encouragement are particularly true as regards behavioural changes everyone will have to make if we are to meet our local and national targets to reduce carbon emissions. At a recent "Grow Green Together" conference at Northamptonshire ACRE, the charity that works with rural communities to improve quality of life, 75 local people gathered together to express their hopes for our rural environment and listen to presentations on the biodiversity crisis, food waste and the impact of tree planting. More details about the speakers are in this link:

[Grow Green Together Conference 2022](#)
[Northamptonshire ACRE \(northantsacre.org.uk\)](http://northantsacre.org.uk)

In October I will be attending the next meeting of the West Northants Council cross party group set up to ensure delivery of the Council's net zero carbon

emission goals. The Council has committed to achieve net zero on its own operations by 2030 and those of businesses and residents by 2045. This commitment will be hugely challenging for the current administration, which is currently facing even more immediate problems. With almost 20% of rural communities in West Northants in fuel poverty there are many in our villages who must feel extremely anxious about how to cope during the coming winter even with the recently announced October energy price freeze. The Council is yet to announce measures such as supporting community "warm hubs" but it is hoped that there will be information soon.

West Northants Council has also issued an alert that it is facing financial pressures which could lead to a budget shortfall of £10m. It will be bringing in spending controls and making budget cuts which are likely to reduce some services. Inflation rates have driven up running and construction costs and the services that the council buys, and the pressures are most evident in the services dealing with children in care and vulnerable adults and with those in need of temporary accommodation. 18 months in to the new unitary authority there are difficult decisions to be made as to efficiency savings to protect essential services. Opposition councillors have also been highlighting the option of utilising part of the council's considerable reserves to lessen the impact of reducing services.

WALKING GROUP

(From Lesley Loader, lloader@btinternet.com
 or Tel: 07783521052)

Dates for the next walks are:-

Thursday 6 October
 Sunday 16 October

Thursday 3 November
 Sunday 20 November

We usually walk about 7/8 miles with a lunch stop after 5 miles. It is possible for walkers to stop at lunch time and either be picked up by a friend or family member, or we can arrange to have a car at the lunch stop to bring walkers back to Kilsby.

For more information contact me (details above).

SUDOKU - Solution on page 20

© Puzzle Choice

					1		4
2				6			
		5	8			2	
		9	1			6	
6				4			
					9		7
	5	6	7	1		8	
	2			3			
	7	4	6	2		3	

Eds: Councillor Alan Chantler has not been able to send a report this month because of illness.




KILSBY PLAYTIME


Join us for some pre-schooler fun!
Toys, crafts and refreshments – including a cuppa
Every Monday in term time at Kilsby Village Hall
09:45 – 11:45
£2 per family – no need to book just turn up
Contact Polly for more info
pollyredhead@hotmail.com
07780601052

KILSBY VILLAGE HALL CINEMA

Saturday 26th November 2022
Come and join us for refreshments at 7:30pm
Film starts 8:00pm (CERT PG 13)




Tickets £7.00 each
Tickets on sale at the Village Shop
Also available from Ruth Axtell 01788 823662/07814 106401
Julie Bunyan 01788 823707/07940 525272
All proceeds to the Village Hall





Grant Bowles Your Local Travel Counsellor

01788 670038
grant.bowles@travelcounsellors.com
www.travelcounsellors.com/grant.bowles



With us...it's personal



ART EXHIBITION KILSBY ART CLASS

The Class are having an
Exhibition
On
Saturday 22nd October
10.00 am to 4.30 pm
In Kilsby Village Hall
We are celebrating
30 years of art classes in the village
All are welcome

St. Faith's Social Committee

(From Margaret Dean, Tel: 822724)

Coffee Morning

Our Coffee Morning in the church on 23rd August raised £95. This, added to £20 left over from the Strawberries and Wine Evening, meant we gave £115 to church funds. Thank you to all our regulars who still come - we would like to see some new faces.

Quiz

We are having another Quiz on 19th November in the Village Hall. It will be the usual format: teams of four or six, fish and chip supper with pudding, bring your own drink and glasses. Get your teams in early. Unfortunately I have had to put the price up to £12 - the first rise since 2016. You all know the current situation.

Date for your Diary

On Tuesday 13th December we will be having coffee in the Kilsby Room - £2.50 on the door plus raffle and tombola. This event is always very enjoyable as it leads up to Christmas. Do try to come to join us.

Take care and stay safe.

Margaret



Bark & Beyond is pet training with a difference. We focus on strengthening the bond between pets and owners, through positive reinforcement.

What We Offer

Group Classes Behavioural Support 1-to-1 Training

I have a first class (Hons) degree in Animal Behaviour as well as being a qualified post 16 teacher and over 10 years experience working with and training animals.

Call us on:
07958016736
www.barkandbeyond.net

We are fully insured



THANK YOU!

A big thank you to everyone who supported the second Kilsby Summer Fete - including the stallholders, the Red Lion Pub, the Kilsby Village Shop and the WI as well as all of the entertainers, and David Head for stage managing the day. Not to mention the hardworking Committee who pulled the whole thing together. Thanks also to Grantscape for funding the fete again, and the support of the Parish Council.

We should be able to distribute some money later in the year, so if your organisation would like to be considered please send an email to sarah@kilsbyevents.org.uk stating what you would like to do with the money.

THE
RED LION



~ KILSBY ~

26 Main Road, Kilsby CV23 8XP

Call: 01788 822265 / Email: info@redlionkilsby.co.uk

Facebook Page: The Red Lion, Kilsby / Website:
www.redlionkilsby.co.uk

Opening Hours

Bar

Sunday 12pm-10pm

Monday - Saturday: 12pm-11pm

Kitchen

Monday & Tuesday: Closed

Wednesday - Friday: 12pm-2.30pm & 6pm-9pm

Saturday: 12pm-3pm & 6pm-9pm

Sunday: 12pm-4pm

Upcoming Events

Burger & a Pint* for £11 Every Wednesday

*Pint of Fosters, John Smiths, Small House Wine or Pint of Soft Drink from the pump

Open Mic Night – Sunday October 9th, 6pm – 9pm

Sam's Leaving Party – Sunday 23rd October, 5pm – 11pm

Halloween Quiz Night – Sunday 30th October, 8pm

KILSBY CHURCH 100 CLUB

(From Lorna Griffiths, Tel: 823246)

Just a quick reminder that all fees for next year's 100 Club should now have been paid.

Many thanks to all who are continuing to support our efforts to maintain our village church building, and if you would like to join us, the fees are still £60 for the year (a pleasant surprise considering the present hike in all other costs), payable in a variety of ways.

We have suffered some losses in membership for various reasons, so do call me if you want more details on how to join. I look forward to hearing from you.

Thanks again
Lorna

(Eds: see details of latest winners on page 9.)

DEAN MEREDITH
BUILDING CONTRACTOR
KILSBY BASED

 **01788 823344/07753 572822**

 **@KILSBY_BUILDER**

BRICK AND STONEMWORK
RENOVATIONS/ALTERATIONS
RE-POINTING
CHIMNEY WORK
GENERAL PROPERTY
MAINTENANCE

COMMUNITY SPEED WATCH 2022

(From Ian Weston - Highways Warden / Speed Watch Co-Ordinator, Tel: 01788 823332)

We are now at the end of our second and final Community Speed Watch for this year. Many thanks to Janette, Jenny, Julie and Lyn for their invaluable help - without them we could not have operated. There were only five of us to cover a four week period which made it extremely difficult to fully utilise the equipment. Special thanks also to Howard Gibbs for collating and downloading the information collected.

We had no new offers of help and, unfortunately, this appears to indicate that people of Kilsby are not too concerned regarding the speeding traffic. Therefore we were only able to monitor traffic for a limited number of occasions, focussing on the A361.

I have, again, had quite a few complaints about the A361, but sadly none of the people actually offered to assist with monitoring the speed of traffic. This indicates that although residents want something done about speeding in the village no one is prepared to help to do anything about it. People seem to think that restrictions will be imposed with no evidence that they are needed. The speed sign does seem to be helping but, as always, there are always drivers who choose to ignore it.

We may be invited to participate in Speed Watch again next year however this will not be viable without more support as we cannot maximise the use of the equipment. Sadly this may be our last chance to show that more speeding restrictions are needed - especially on the A361 - as there would be no proof of the volume of speeding traffic. With the DIRFT expansion it will only mean more vehicles, both cars and HGVs, on this already dangerous route.

KILSBY HISTORY SOCIETY

(From Diana Smith, Tel 822197)

Our next History Society meeting will be on Thursday 17th November at 7.30 pm in the Kilsby Room of the Village Hall.

Our speaker, Jackie Hibbert, is a local historian who used to live in Kilsby. She now lives in Welton. Her talk is based on characters portrayed through the ages using their hats! It is entitled 'A History of Welton in Five Hats and a Wig'.

The fee for this meeting is £2 for members and £4 for non-members.

Tea, coffee and biscuits will be provided. Everyone is welcome.

CRICK MEDICAL PRACTICE

(From Eddie Taken, Tel: 822068)

Flu Vaccinations

Three groups will be eligible for the annual flu vaccination: over 65's, 50- 64's and vulnerable patients with long term conditions (LTC's). Each of the three groups will have a different vaccination and these vaccines should start to become available in mid-September. The vaccination sessions will start on 1st October to allow for possible delays.

The dates are as follows: -

At Crick Surgery

1 st October	Over 65's and LTC's
8 th October	Over 65's and LTC's
15 th October	Over 65's and LTC's
22 nd October	Over 65's and 50-64's
29 th October	50- 64's only
5 th November	Remaining patients in all groups

At West Haddon

10th 11th 18th and 25th October

Covid Booster

Qualifying patients will be contacted directly by the NHS to make an appointment and this process has already begun. The surgery will not be doing these vaccinations but you will be advised where these are available locally.

Training days

The dates for the training days are as follows: -
12th October, 9th November and 14th December

Saturday Surgeries

There will be surgeries on the following Saturdays:-
October 8th, November 12th and December 3rd.

KILSBY CHURCH 100 CLUB

July Winners

£40 (24) J Strong; £30 (67) C Spry;
£20 (39) L Pyne; £20 (69) T Dougan;
£10 (53) M and H Cheney.

August Winners

£100 (63) J Chappell; £65 (56) H Grainger;
£40 (97) J Ayton; £40 (25) G Mason;
£20 (53) M and H Cheney.

(Eds: see also article on page 8.)



Facing issues with your laptop or tech?

I can get your devices back up and running in no time. My name is Tim Banks, and I am an IT support specialist based in Kilsby. With 30 years of experience in this industry, I have the expertise and knowledge to offer IT set-up and solutions for your homes or business. I offer my services in Rugby, Daventry and surrounding villages. I accept payments through BACS, PayPal, cheque and cash. Whatever your IT requirements or problems are, I am here to help. After an initial phone consultation, home visits can be arranged or I can connect remotely to solve simple problems.

- Computer set-up and networking issues
- PC/computer/laptop/tablet/mobile device advice
- MacBook set-up
- Home and business technology set-up
- Printer and scanner set-up
- iPad, email, image transfer and storage training
- Internet network security
- Wi-Fi troubleshooting
- Hardware installation and more



RIENZO
TECHNOLOGY
SERVICES

Call me on 01788 823 759 or 07977 019147

tim.banks@rienzo.co.uk

rienzo.co.uk

NATURE NOTES - JULY 2022

(From Caroline Grey, caro.grey@btinternet.com)

Well, hedgehogs continue to delight us with their cute faces and funny quick movements – I can quite see why they feature in so many kid's books, including my favourite, Mrs Tigglewinkle! Only thing is, I have never seen one wearing a pinny or carrying anyone's washing away! Having said that we have seen their more aggressive side when faced with an intruder at the food plate – a very forceful shove with the shoulder usually gets rid of most competition! The solution to that is we now divide the food between two plates so there can be no arguing!

We rescued a tiny hoglet that was out in the daytime and took it to Animal House in Rugby. It seemed fine to us (and happily tried to climb out of the box on the car journey) but sadly they had to put it to sleep a couple of days later, so I presume it had an infection or something that was hard to see. Hogs shouldn't be outside in the open during the day, particularly as the autumn/winter progresses, so consider doing the same if you see one wandering about during the day. They also should weigh about 600 grams to have any hope of surviving hibernation so keeping up the feeding for the next couple of months should help them. We have a couple feeding now who are most definitely this year's hoglets so we're hoping our 'café' is helping to feed them up for their long winter snooze.

Also don't tidy your garden too much this autumn – leaves and foliage provide homes for bugs which hogs feed on and will also provide material for keeping them cosy during the winter - so a win-win for our fab prickly friends!

We saw a great example of what is meant by 'pecking order' on our night-time camera. Once daylight arrives the birds appear to Hoover up what's left on the food plates, usually jackdaws, magpies, and pigeons. This one morning there were two huge crows, so it was fun to see a couple of jackdaws cowering at the side not daring to come forward and eat whereas they are usually top of the aggressive pecking order beside sparrows, starlings and blue tits!

Several people have mentioned seeing a hummingbird hawk moth this summer – they are amazing day flying moths which literally hover with extremely fast wings whilst feeding with their long proboscis, very similar to a hummingbird (which sadly we don't get in the UK). They mainly come from Southern Europe where they breed but it's thought a few breed in southern England encouraged by the warm summer we've had this year - hence a 4-fold increase in sightings.

GARDENERS' CORNER

Knee deep in apples...

What a wonderful year for apples! It is worth picking any still on your trees before the winds blow them off.

Continue to take cuttings

There is still time to take cuttings of hardy shrubs. Take a 1ft piece of a mature healthy shoot of this year's growth (ie stem brown not green). Cut the bottom level just at the bottom of a leaf joint. Cut the top at an angle (so that you can tell the top from the bottom!) Take the leaves off the bottom half and stick it in the ground in a sheltered place open to the rain. Then forget about it until the spring.

Divide your herbaceous perennials

Cut down your herbaceous perennials when they have finished flowering. If you have a plant that has grown too big, then dig it up and divide off strong looking pieces with roots, discarding the old centre. Split big plants using a spade and fork back to back. Dig in some compost and give a dressing of bone meal before re-planting.

Clear your greenhouse

It is time to clear the greenhouse of the old tomatoes and clean it out. Start moving in any tender plants for shelter in the winter. Keep it well ventilated with the door open. Only close it up when a frost threatens at night.

Jobs to do in October

Plant bulbs in pots and borders.

Plant garlic. Push in deeply to stop birds pulling them up.

Get your seed orders in.

Jobs to do in November

Tidy up the flower border for winter.

Start winter pruning of roses with a light cut-back to stop rocking in the wind.

Times past...

In 'Directions for the Gardiner', John Evelyn, 1686:

"You can hardly be too sparing of water to your hous'd plants; the not observing of this, destroys more plants than all the rudeness of the Season: To know when they want refreshing consider the leaves; if they shrivel and fold up, give them drink; if pale and whitish, they have already too much; and the defect is at the roots, which are in peril of rotting."

Good Gardening!

Rox Kibble



rugbyphysio

& Orthotika Podiatry

For all of your Physiotherapy
and Chiropody needs

Call to book your appointment
with us today



01788 565044



www.rugbyphysio.com



07961 378418



admin@rugbyphysio.com

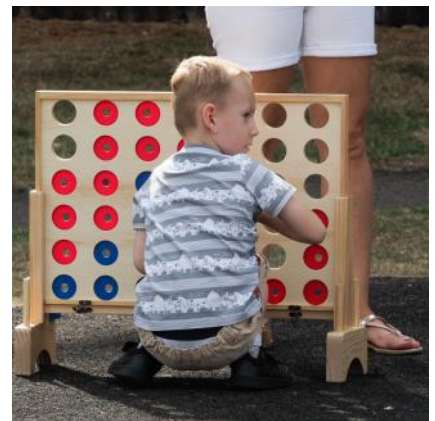
KILSBY VILLAGE FETE -

Photographs courtesy



SUNDAY 28TH AUGUST 2022

of Rosemary Gibb)



KILSBY VILLAGE SHOP

(From Trish Brown, on behalf of the Kilsby Village Shop Management Committee)



After the tremendous heatwave we have been blessed with a September Indian Summer. Our gardens have been revived by the welcome showers and the grass is green again.



September also brought us the sad news of the passing of Queen Elizabeth II which I am sure touched many hearts and leaves us with fond memories of such an incredible lady. On behalf of the Committee and the shop management team our heartfelt wishes go to King Charles III and his family. As we watched Her Majesty's state funeral on the 19th September we had the opportunity to commemorate her amazing reign. I am sure you will join us in saying a huge THANK YOU Your Majesty.

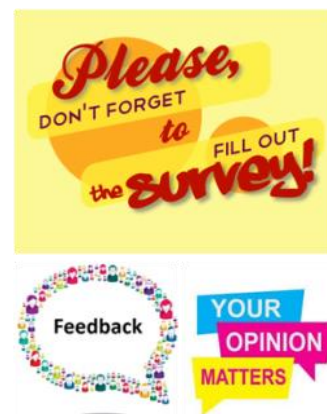
So, what's been happening in your village shop over the last couple of months?

We took part in the Kilsby Village Fete on the 30th August providing our KVS logo preserves and chutneys, together with soft drinks, crisps and sweets. Many thanks to all who came to our stall - we really do value your support. It was great fun and a lovely afternoon with fabulous weather. Thanks to Liz, Keren, Caroline and Elaine (some of our lovely volunteers) for managing the stall.

We have introduced a new line of delicious quiches from Duston Village Bakery with scrumptious fillings of Cheese & Broccoli, Cheese and Sweet Pepper, and traditional Quiche Lorraine. There are three sizes: Large (serves 8), Medium (serves 4 - 6) and Small - brilliant hot or cold for lunches and dinners. They can also be ordered for delivery on a Friday; ideal for the weekend.

Our August AGM updated the shareholders on our 2021/2022 financial position. Unfortunately, last year we made a loss of £3k, compared to a small profit in the previous year. It's important to say that the shop supported the Village through a number of Covid lockdowns which gave us the opportunity to bank additional funds. However, we are currently seeing a drop in sales as people return to the big supermarkets, causing us to scratch our heads as to how we can get you back into the shop. Do you know that all it would take is for each household to **spend £3 per week in our shop** - that is just a 2lt milk, a loaf of bread and a packet of biscuits. Three items would protect your shop now and in the future. So, spare a thought for your village shop - we will all at some point in our lives, as residents of Kilsby, need the Village Shop.

Your Village Shop opened its doors back on the 25th of March 2018 following a local survey. Four years on and the committee would like to ask for your help and advice again. We want to review what products and services the shop offers, if you use them, or if they need to change. This is important: a shop must meet the needs of the community so that we use it; otherwise, it won't be viable. We will be surveying the village in October/November so please keep an eye out for the questionnaire popping through your letter box and help us protect the future of the shop by giving us your thoughts,



We say goodbye to our lovely Abi, who covers Sundays, and who is heading to university. Many thanks Abi for your great work - we wish you luck at Newcastle University. We are pleased to welcome Sussie, who takes over from Abi. Sussie has grown up in the village and is looking forward to meeting our lovely customers, so please pop in and say hello to her from October.

Dare I say it - Christmas!

We are starting our preparations for Christmas and again we are teaming up with our fabulous local suppliers: Chapmans Family Butchers of Lutterworth who supply turkeys, meats and cockerels; Sercombes Butchers - for their amazing seasonal pies, cold meat, sausages and bacon; Fatherson Bakery - for their stunning mince pies and Christmas cake selection and lastly, Fowlers - with their special and scrumptious Christmas cheese selection. Pop into the shop to have a chat with Sarah our Shop Manager. Orders will be taken in November, so don't be disappointed, start your preparations now.



We need you!

Can you spare 2 hours per week to volunteer in our amazing Village Shop. You can either team up with one of our volunteers or join with a friend, neighbour, or family member. It's a great way to catch up with fellow villagers and to meet our regular and new customers. Pop in for a chat with Sarah. It's great fun so why not support your shop and join our fabulous team.

We are very proud to support local businesses providing the best quality produce at great prices. Claybrooke Mill, and Sercombes are just two of our fabulous suppliers.

Claybrooke Mill of Leicestershire is a family business milling a range of premium organic flours and muesli mixes. So, if you love baking, especially bread making, then why not pop in to take your pick from some of the following flours: Stoneground Wholemeal, Organic Brown or White, Siskin, Onion, Nuthatch, Tomato, Spelt and of course Plain and Self-Raising; we also do dough conditioners. Their cereal range covers not only cornflakes and tasty muesli but oats and bran flakes too. We have just put our order in for their fabulous Christmas cake mix – following your amazing feedback over the last two years.

Sercombes of Rugby - beautiful pork, beef, haslet, and ham slices as well as sausage rolls, pork, pork and Stilton, chicken and ham pies and their amazing streaky, back, and smoked bacon, sausages (traditional/ Lincoln & Cumberland) and black pudding. We also stock a range of their frozen pies in steak and ale or kidney, chicken and mushroom, or ham in large and individual sizes.

Don't forget our free delivery service in Kilsby; if you would like to place an order, please let us know via email at villageshopkilsby@gmail.com or you can also call us on our direct number **07469 255517** for orders or general enquiries.

KILSBY GARDEN AND PRODUCE ASSOCIATION



Annual Garden and Produce Show

The Annual Show looked beautiful although the entries were lower than last year. The produce looked as good as always, though the cookery and handicraft sections did look a little empty. This is a great opportunity for villagers to show off their handicraft talents on projects created over the past twelve months.



We awarded the gleaming cups to the following recipients:

Courtyard Garden to Carol Chamberlain,
Decorative Garden to John and Annie Madigan
Mixed Garden to John Beeston

The cup for most attractive **Planter** was won by Sam and Mick for the Watling Street planter. Second place went to the Kilsby Stitches, and third place to Diane Graham for the Kilsby Garden and Produce Association planter.

At the Show:

The **Children's Cup** was awarded to Fred Gosling.

The **Hilda Ollerenshaw Cup** for the best Victoria Sandwich went to Alison Harrison.

The **Warner Crofts Cup** for the most points in the Cookery Section went to Judy Ayton,

The **Eva Lennox Cup** for the most points for an allotment holder went to Charles Smedley,

The **Bracebridge Cleasby Cup** for the most points for vegetables, fruit and flowers went to Charles Smedley, with second place going to Carol Chamberlain and third place to Diane Graham.

The **Banksian Medal** for the most points for vegetables, fruit and flowers went to Carol Chamberlain. This medal can only be won once in three years by the same person.



AGM

The AGM for the Garden Association will be held on Tuesday 22nd November at 8.00 pm at the Village Hall. Everyone is welcome and we are having a speaker from the Kibworth Nursery, Angela Holland, she will be bringing some plants to purchase, so remember to bring some money with you.

(Photographs courtesy of Diane Graham)

KILSBY WOMEN'S INSTITUTE

(From Karen Gilmurray, Tel:823939)

We offer our sincere condolences to the Royal family on the death of Queen Elizabeth II. We were all deeply saddened by the passing of this amazing woman; she was an example to us all of how to be strong and dignified but also kind and compassionate. RIP.

Our September speaker, the herbalist Lois Campbell, talked to us about the everyday plants that we can all utilize to improve our health and the very important part our immune system plays in keeping us well.

This second year of the Kilsby Summer Fete we again offered tea and cake in the village hall. Fortunately it wasn't as manic as in 2021! We had a lovely and successful day. Thank you to all who came to support us.

October is our AGM. Then in November we'll hear from Ruth Thomas about 'Christmas Past' in Northamptonshire. Our meetings are at 19:30 on the second Thursday of each month in the village hall - visitors are welcome - it's just £5.

KILSBY UNITED REFORMED CHURCH



Mission Statement

The purpose of this Church is to provide a warm and welcoming place for all people, of any age, to worship and to learn about Faith.

Services

Sunday mornings at 11.00 am

October

2nd Mr John Perkins
 9th Mr Keith Bishop
 16th Pastor Cecil Gill
 23rd Mr Andrew Howes Holy Communion
 30th Joint Pastorate Service at Creton - with The Moderator

November

6th Mr David and Mrs Pat Biddle
 13th Rev Kit Jarman Remembrance Service
 20th Pastor Cecil Gill Holy Communion
 27th Mr Tony Cervantes

Community Café

Our increasingly busy and popular Community Café is open every Monday and Thursday from 9.00 am to 12.00 noon. Everyone is very welcome.

Scrabble

Every Wednesday at 1.00 pm. Everyone is welcome. We do need more people to come and join in now the days are getting colder.

Sewing Group

Every other Friday 2.00 pm - 4.00 pm. Everyone will be welcomed.

Café - Help Needed

We would appreciate some help in the café, however small or large the amount of time you could spare.

Contact: Ann Tailby 822140 or Val Janes 822751.

Stephen Hartwell Grass Mowing Contractors

Est 2003. Kilsby Based Tel: (01788) 824556

Mobile 07743 327404.

- **Regular Grass Mowing**
- **Pressure Washing**
- **Turf Laid**
- **Block Paving**
- **Patios**
- **Sheds Supplied and Erected**
- **Fencing**
- **Hedge Cutting**
- **Tree Work**
- **Green Houses**
- **General Landscaping**

No VAT - References - Contract Grass Cutting Personal Service -
 Competitive Rates

NEWS FROM ST. FAITH'S

(From Rev Nigel Fry, enfrys@gmail.com)

Upcoming services at St Faith's and other services and events

October

Saturday 1st October	10.00 am -12.00 noon Decorating St Faith's for Harvest <i>All welcome to come along and help. No previous experience necessary! Refreshments provided.*</i>
Sunday 2nd October	6.00 pm Harvest Evensong
Saturday 8th October	9.30am 'Leading your Church into Growth' Weedon Village Hall*
Sunday 9th October	10.00 am Holy Communion
Sunday 16th October	10.00 am Holy Communion at St Mary's Barby
Sunday 23rd October	10.00 am Holy Communion
Sunday 30th October	10.00 am Holy Communion at St Mary's Barby

November

Sunday 6th November	6.00 pm Evening Service
Friday 11th November	10.55am Remembrance at the War Memorial
Sunday 13th November	10.00 am Holy Communion 11.00 am Act of Remembrance
Sunday 20th November	10.00 am Holy Communion St Mary's Barby
Saturday 26th November	10.00 am - 'Explore Day' All Saints' School, Northampton*
Sunday 27th November	10.00 am Holy Communion for Advent

*Email Rev Nigel - enfrys@gmail.com - for further details.

Many thanks to those who are working hard to make the Churchyard so welcoming; even the bench has been refurbished. Brilliant. Thank you.

KILSBY BOWLS

(From Margaret Dean, Tel: 822724)

Bowls is NOT just an old person's game. Many professional players started as teenagers or younger.

At Kilsby we play Short Mat Bowls. The club has space for two mats, with each mat having two teams of four players (although sometimes we change this to suit the number of members playing).

We use standard bowls with a bias and in different sizes to suit your hand. The club has a few spare bowls and members will often share their own. We usually play using two bowls but members often carry up to four.

We have eleven members at the moment so there is plenty of room for new people. We play in the Village Hall for up to two hours on a Wednesday evening, from 7.00 pm until 9.00 pm.

Charges are £10.00 per year for membership and £2.50 per evening game. These charges are only payable after four weeks to give you time to try the game out and decide to join us.

**SO COME AND TRY IT OUT
YOU'VE NOTHING TO LOSE**

Northants Historic Churches Trust Ride and Stride

(From Gill Mason, Tel: 822658)

Thank you to the two people who took part in this year's Ride and Stride, namely Rev Nigel Fry and Alison Harrison. Thank you also to everyone who sponsored them.

At the time of writing is still too soon after the event for us to know how much has been raised.

KILSBY HISTORY SOCIETY

(From Diana Smith, Tel: 822197), photographs courtesy of Gill Mason)

ST. FAITH'S CHURCH



This is a watercolour painting by Edward Rudge. It was painted in the mid 1830's, before the Victorian restorations.

Notice the rectangular windows in the nave and chancel and the arched clerestory windows, letting light into the upper parts of the church.

Compare this photograph of the same scene as the previous picture.

It was taken in the early 1900's. In the 1860's the windows had been replaced with ones in a gothic perpendicular style and the clerestory windows altered to match.

This photograph also shows the pathway to the door in the chancel used by the Vicar as the nearest point of access from the Vicarage of the time.



This interior view was taken before the Second World War. The church was lit by oil lamps. We can see the altar and sanctuary as it appeared before the wood panelling was erected as a memorial to Richard Croft. The altar rails appear to be the ones now in place in the side chapel.

NEWS FROM KILSBY SCHOOL

(From Karen Burton, mrs.burton@kilsbyprimary.net)

We all returned to school on Monday 5th September after an enjoyable and relaxing summer break. As we have only been back in school for 2 weeks there is not very much to report at this stage.

Our 24 new Reception children have settled in extremely well in Chestnut class with Miss Allen. They have enjoyed getting to know one another, finding out about school routines and have already started working on their phonics. They've been having great fun playing in their outdoor play area too! In addition to the new Reception children, several children have also joined us in different year groups after moving into the area.



Late in the day on Thursday 8th September we received the very sad news of the passing of our wonderful Queen, Elizabeth II. This was a significant moment in our country's history with most of us only knowing a country with the Queen as our Head of State. In school, during a special assembly on Friday 9th September, we commemorated the life of this amazing lady who dedicated her life to serving our country for more than 70 years. The children remembered, fondly, the lovely Jubilee celebrations earlier in the year.

School was closed on Monday 19th September due to a bank holiday for the funeral. We all wish King Charles III every success in his future reign.



Solution to Sudoku on page 4

© Puzzle Choice

9	7	4	6	2	8	5	3	1
8	2	1	4	3	5	6	7	9
3	5	6	7	1	9	4	8	2
1	8	2	5	6	3	9	4	7
6	3	7	2	9	4	8	1	5
5	4	9	1	8	7	2	6	3
4	9	5	8	7	1	3	2	6
2	1	3	9	4	6	7	5	8
7	6	8	3	5	2	1	9	4

We now have a grand total of 143 children in school which is the largest number for many, many years!



All the children have enjoyed the beginning of the new school year getting to know their new teachers and new classrooms. Music lessons in piano/ keyboard, guitar and violin have now started for those children in Years 1 to 6 who chose to learn an instrument. Also, the photographer has already been into school to take individual and family photographs.

individual and family photographs.



Kilsby Christmas Tree Committee



Kilsby Christmas Tree Lantern Parade Workshops 2022



For the Christmas Tree Light Switch on Event this year we are planning on holding a Lantern Parade through the village from the Kilsby Village Shop to the Christmas Tree. This will start at **4.30 pm**.

We will be holding workshops in November for children and adults to come along and make lanterns for the parade, these will be free of charge and refreshments will be available. Everyone is welcome. They will be held on the following date:

- Saturday 26th November 2021 – 11.00 am until 4.00 pm at Kilsby Village Hall

Just come along to the workshop, although children will need to be accompanied by an adult. If you require any further information, please email us at kilsbychristmastree@gmail.com.

If you are unable to attend this event, a limited number of lantern making kits will be available from Sharon King (07508228736) or Annabel Davies (07511296446) to make in your own time.

20th Anniversary of Kilsby Christmas Tree Light Switch on Event and Lantern Parade 2022

We will be celebrating our 20th Anniversary this year and due to the success of the lottery we are able to provide the event again this year for free! A huge thank you to everyone who continues to support us each month.

The Christmas Tree Light Switch on event will be held on **Saturday 3rd December 2022** on the green at the top of Barby Road, Kilsby. To incorporate the Lantern Parade, we will meet outside the Kilsby Village Shop at **4.30 pm** to meet Father Christmas and we will then follow his sleigh to the village green.

Mince pies and mulled wine will be provided free of charge and there will also be free entertainment for the children. The lights will be switched on at 5.00 pm by Father Christmas. This will then be followed by live music by **'The Tunnellers'**.

The committee will be holding a drawing competition which is open to all children under 16. The picture should be of a Christmas tree and the winner will help Father Christmas switch on the Christmas tree lights. The winning entry will also be used on the advertising posters for the event. All entries should be on a A4 sheet of paper and should include name, address and phone number. They should be sent to Sharon King at 16 Hall Close, Kilsby, by 4th November.

If you would like any further information please contact Sharon King on 07508 228736 or Annabel Davies on 07511 296446.

Buckby Library & Hub

In addition to our library services, we offer other facilities and events. Below is a selection during October and November.

Our art sessions have started. They are drop in (£5 a session) so you can come along any time. The second Saturday of the month is **Art for Relaxation**, 2.00 - 4.00 pm. If you thought you weren't any good at art, come along and have a go in a supportive environment! Then, we have **Art Club in the Hub** for beginners and improvers, weekly on Tuesdays, 2.00 - 4.00 pm. Contact Bridget Arregger on 07512 019521.

Bridget Arregger will also be exhibiting some of her own paintings at the Library & Hub as part of the **South Northants Art Trail**, from 1st - 9th October. In November, we'll have another of our **bi-monthly exhibitions** with paintings by Meryl Lovatt.

Our monthly winter **film nights** will begin on Tuesday October 4th with **Belfast**: a coming-of-age drama written and directed by Sir Kenneth Branagh and based on true story events from his childhood. Doors open at 7.00 pm for a 7.30 pm start; tickets are £6 and refreshments will be available. You can get tickets from Buckby Library & Hub or the Peephole on the High Street. Telephone 01327 842591 or email info@buckbylibraryhub.org

If you are in Long Buckby, our **Stay and Play** sessions have also now started: every Friday of term-time, 2.15-3pm. This is a great chance for your little ones to play, learn and socialise whilst you have the opportunity to meet other parents and have a chat with a cup of tea or coffee. Free drop in sessions.

Buckby Library & Hub: <https://buckbylibraryhub.org>

Kilsby Christmas Tree Committee

Sharon King, 07508228736

Kilsby Christmas Tree Lottery



The committee would like to thank everyone who has taken part in the Kilsby Christmas Tree Lottery so far. The lucky number for August was drawn on Saturday 13th August and was 104. Well done to Jenni Wright who won £60. Number 101 was drawn on Saturday 10th September and the winner was Alex King who won £60.

Half of the money raised each month goes to the prize fund and the other half to the Kilsby Christmas Tree Fund. This money will be used to fund the Christmas Tree light switch-on event for 2022 which will take place on **Saturday 3rd December 2022**.

Each lottery draw takes place on the second Saturday of the month. The draws for the next few months will be as follows:

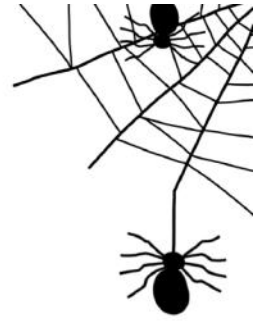
Month	Date
October	Saturday 8 th October 2022
November	Saturday 12 th November 2022
December	Saturday 10 th December 2022

There is still plenty of time to join for just £1 a week, please contact Sharon King on 0750 8228736 or email kilsbychristmastree@gmail.com for more information.

Thank you
Kilsby Christmas Tree Committee



KILSBY KRONICKLE
Kids Korner



Halloween is coming!

Design your dream pumpkin carving by drawing on the blank pumpkin below....

Why not ask an adult to help you bring your design to life on a real pumpkin this halloween?



Things to do in October /November

Use the Village Shop more

Help decorate the church for Harvest

Offer to help in the Café

Volunteer to work in the Shop

Join the Parish Council

Go to the St. Faith's SC Quiz

Go to the lantern-making workshop

Get your child to enter the drawing competition

Suggest ideas for village projects

Join the Church 100 Club

Go on a Walking Group walk

Go to the Art Exhibition

Go to Village Hall cinema

Take up Short Mat Bowls

Go to the History Society meeting

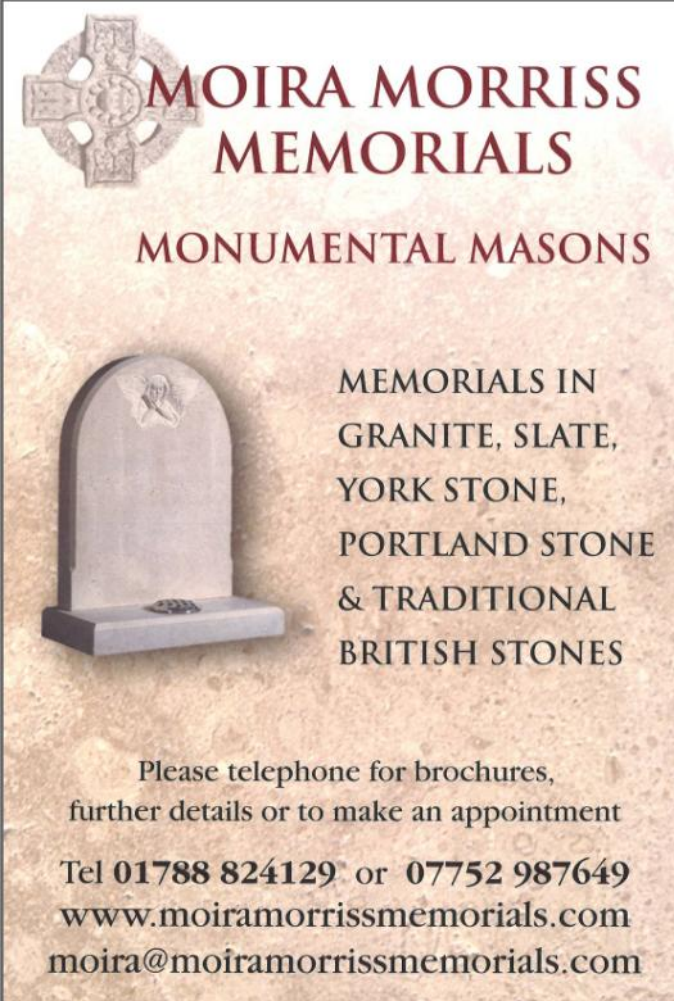
Go to the Garden Assn AGM

Go to a WI Meeting

Join the Scrabble group

Join the Christmas Tree lottery

Apply for a grant from the Fete Cmtee



**MOIRA MORRISS
MEMORIALS**

MONUMENTAL MASONS

MEMORIALS IN
GRANITE, SLATE,
YORK STONE,
PORTLAND STONE
& TRADITIONAL
BRITISH STONES

Please telephone for brochures,
further details or to make an appointment

Tel 01788 824129 or 07752 987649
www.moiramorrissmemorials.com
moira@moiramorrissmemorials.com

WANTED

Ideas for village projects (see page 3)

New Parish Councillor (see page 3)

More members for Church 100 Club (see page 8)

Volunteers to work in the Village Shop (see page 15)

Help at the Community Café (see page 17)

New members for Scrabble group (see page 17)

New members for Bowls Club (see page 18)

Contributions to the Editors

Preferably by e-mail to Chris Lomas at: lomdoucd@gmail.com
or by any other computer media or on paper to:

Chris Lomas, The New House, 20 Rugby Road (822650)

Richard Linnell, Bolberry House, Rugby Road (822382)

David George, 12 Hall Close (822827)

The deadline for the next issue

is

Sunday 20th November 2022